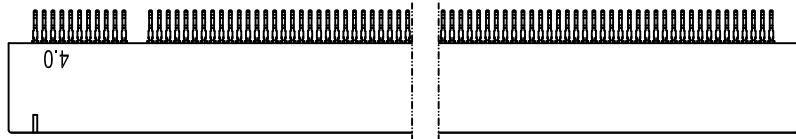
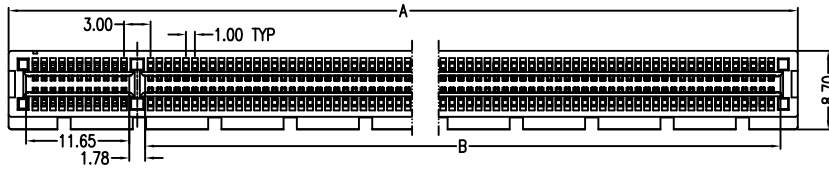


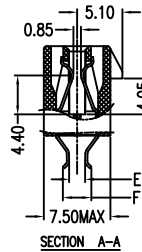
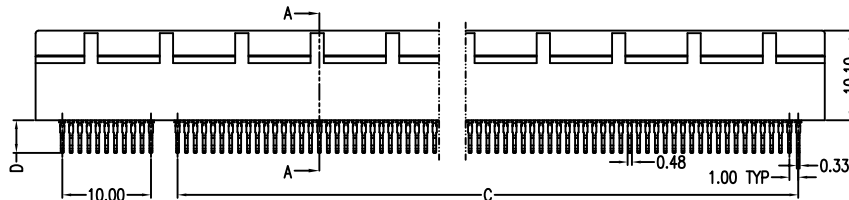
A



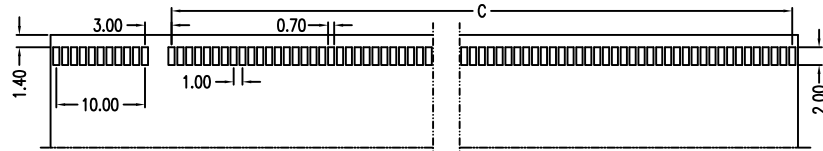
B



C

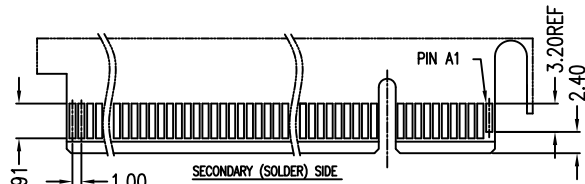


D

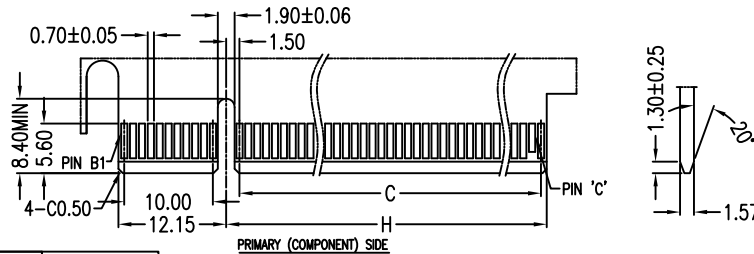


P.C.B. Layout For Straddle

E



F



#POS REF	DIM 'A'	DIM 'B'	DIM 'C'	DIM 'H'	PIN 'C'
36P	25.00	7.65	6.00	8.15	B17
64P	39.00	21.65	20.00	22.15	B31
98P	56.00	38.65	37.00	39.15	B48
164P	89.00	71.65	70.00	72.15	B81

PCB Thickness	DIM 'D'	DIM 'E'	DIM 'F'	DIM 'G'
1.6mm	3.51	1.40	2.81	1.60
2.0mm	3.68	1.80	3.21	2.00

NOTES:

***Material**

Body : Nylon9T, UL 94V-0 Rated.

Color: Black.

Contacts: Brass.

Plating: Au plating on contact area;

Sn(100u" Min.) plating on solder tail;

Ni(50u" Min.) underplating overall.

***Mechanical:**

Insertion Force: 1.15N max per contact pair;

Withdrawal Force: 0.15N min per contact pair;

Contact Retention Force: 3.43N min per contact;

Durability: 50 cycles

***Electrical Specification**

Current Rating : 1.1 Ampere

Contact Resistance : 30 mΩ Max.

Insulation Resistance : 1000 MΩ Min.

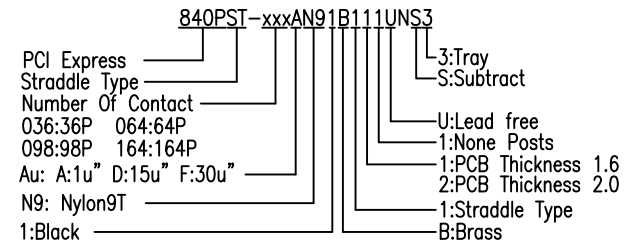
Dielectric Withstanding Voltage: 500 VAC

***Environmental**

Operating Temperature : -55°C to +105°C

This product should be in use in 168 hours after the vacuum packaging is opened. If the product cannot be used up in 168 hours please vacuum the packing. If the vacuum packaging cannot be restored, please bake the product before production. Baking condition: 150°C/4H or 180°C/2H.

***How to order:**



PROPRIETARY NOTE:

This document contains confidential information and proprietary to Rego Electronics and shall not be reproduced or disclosed to other documents or used for any purpose other than that for which was obtained without the expressed written consent of Rego Electronics.

.X ± 0.35	APPROVED: Chris	 http://www.rego.com.tw
.XX ± 0.25	CHECKED: Andy	
.XXX ± 0.15	DRAWN: Vic	
X* ± 3'		
UNITS: mm	SCALE: NONE	TITLE: PCI Express 4.0 Straddle Type PART NO: 840PST-xxxAN91B111UNS3 SHEET: 1 OF 1

C	12.7.2019
REV	DATE