

A

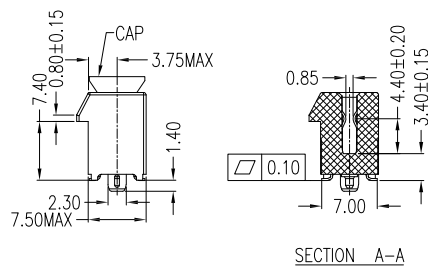
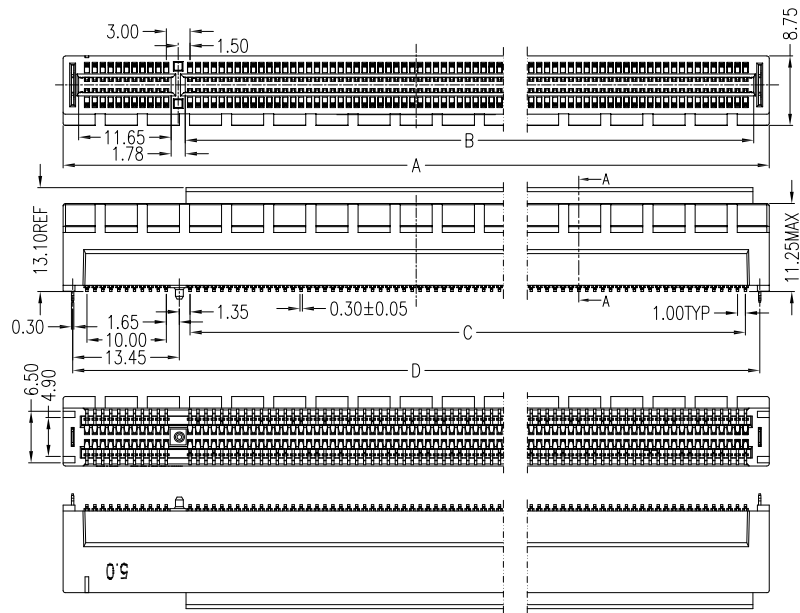
B

C

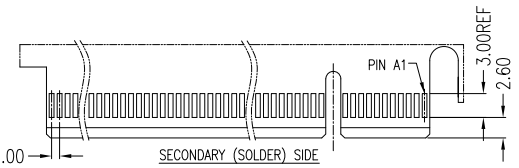
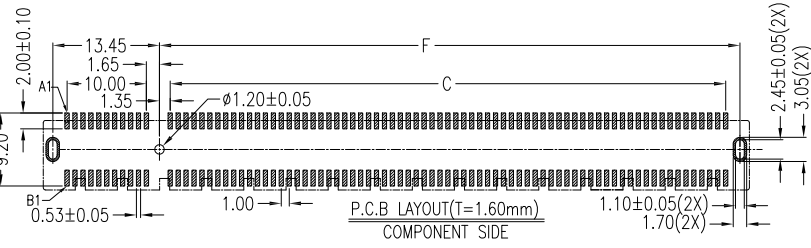
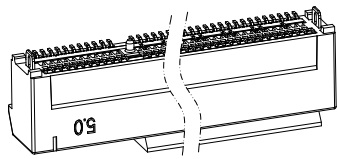
D

E

F



#POS REF	DIM'A'	DIM'B'	DIM'C'	DIM'D'	DIM'E'	DIM'F'
36P	25.00	7.65	6.00	22.60	8.15	9.15
64P	39.00	21.65	20.00	36.60	22.15	23.15
98P	56.00	38.65	37.00	53.60	39.15	40.15
164P	89.00	71.65	70.00	86.60	72.15	73.15



PRIMARY (COMPONENT) SIDE
ADD-IN CARD EDGE-FINGER DIMENSIONS
DEFAULT TOLERANCE ±0.13

NOTES:

***Material**

Housing: PA10T, UL 94V-0.
Cap: LCP, UL 94V-0.
Contacts: Copper Alloy.
Plating : Au Plating on Contact Area.
Sn (100u" Min.) plating on solder tail.
Ni (50u" Min.) underplating overall.

EMI: Stainless steel.
Harpoon: Brass.
Plating: Ni (50u" Min.) plating overall.

***Mechanical:**

Insertion Force: 1.15N max per contact pair.
Withdrawal Force: 0.15N min per contact pair.
Contact Retention Force: 3.43N min per contact.
Durability: 50 cycles.

***Electrical Specification**

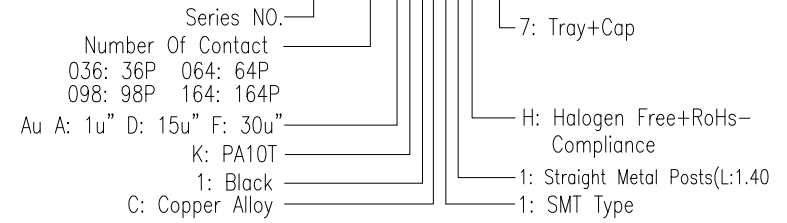
Current Rating : 1.1 Ampere.
Contact Resistance : 30 mΩ Max.
Insulation Resistance : 1000 MΩ Min.
Dielectric Withstanding Voltage: 500 VAC.

***Environmental**


Operating Temperature: -55°C To +105°C
This product should be in use in 168 hours after the vacuum packaging is opened. If the product cannot be used up in 168 hours please vacuum the packing. If the vacuum packaging cannot be restored, please bake the product before production. Baking condition: 150°C/4H or 180°C/2H.

How to order:

840PCIE-XXXAK1C11HNZ



PROPRIETARY NOTE:
This document contains confidential information and proprietary to Rego Electronics and shall not be reproduced or disclosed to other documents or used for any purpose other than that for which was obtained without the expressed written consent of Rego Electronics.

.X ± 0.35	APPROVED: Chris	 http://www.rego.com.tw
.XX ± 0.25	CHECKED: Andy	
.XXX ± 0.15	DRAWN: Vic	
X* ± 3*	UNITS: mm	SCALE: NONE
PART NO: 840PCIE-xxxAK1C11HN7		SHEET: 1 OF 1

B	20.7.2022
REV	DATE