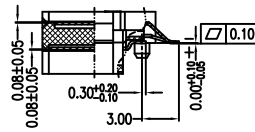
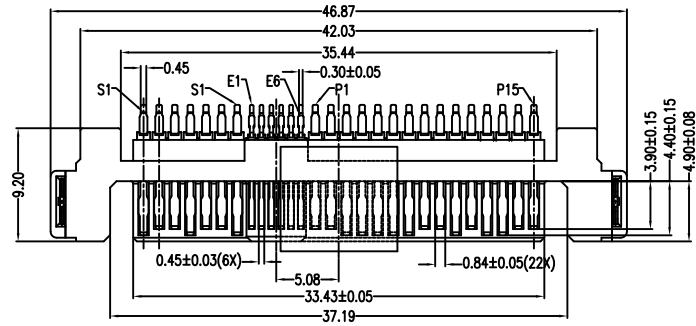
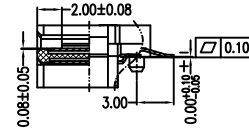


A

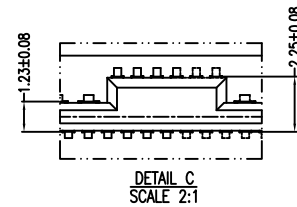
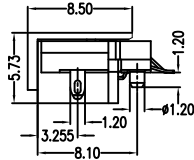
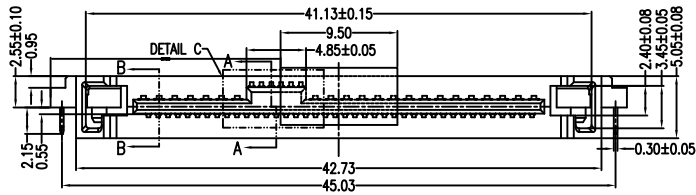


SECT A-A



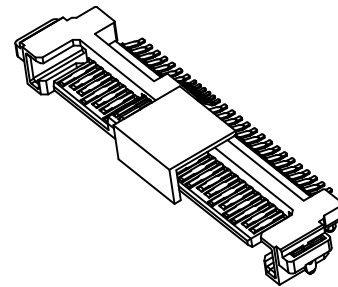
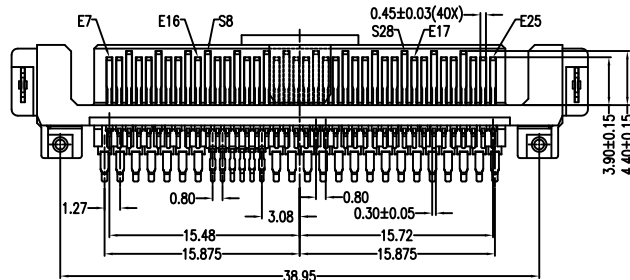
SECT B-B

B

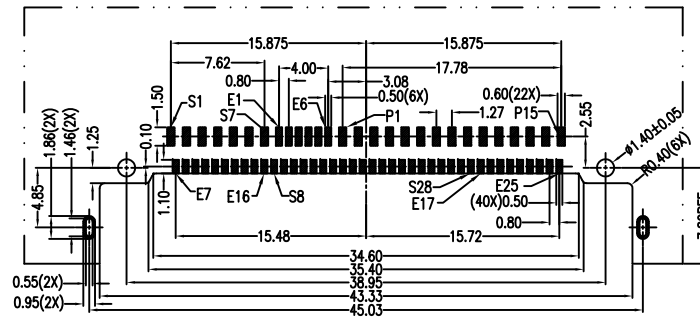


DETAIL C
SCALE 2:1

C



D



PCB LAYOUT(T=1.60mm)
COMPONENT SIDE

E

F

F	01.8.2022
REV	DATE

NOTES

***Material**

Housing: LCP, UL 94V-0.
 Contact: Brass.
 Plating: Au plating on contact area.
 Sn(100u" min.) plating on solder tail.
 Ni (50u" min.) underplating overall.
 Harpoon: Brass.
 Plating: Sn(100u" Min.) plating overall.
 Ni(50u" Min.) underplating overall.

***Mechanical**

Insertion Force: 59N max.
 Withdrawal Force: 6N min.
 Durability: 500 cycles.

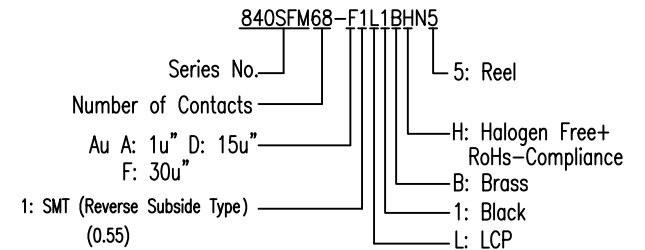
***Electrical Specification**

Current Rating: 1.5 Ampere per power contact.
 Contact Resistance: 30 mΩ max.
 Insulation Resistance: 1000 MΩ min.
 Dielectric Withstanding Voltage: 500 VAC.

***Environmental**

Operating Temperature: 0°C to +55°C.

***How to order**



PROPRIETARY NOTE:

This document contains confidential information and proprietary to Rego Electronics and shall not be reproduced or disclosed to other documents or used for any purpose other than that for which was obtained without the expressed written consent of Rego Electronics.

.X ± 0.35	APPROVED: Chris	 http://www.rego.com.tw
.XX ± 0.25	CHECKED: Andy	
.XXX ± 0.15	DRAWN: Vic	
X° ± 3'	UNITS: mm	SCALE: NONE
TITLE: SFF-8639 (SAS/PCIe) 68 Pins Male Right Angle SMT Type, Reverse Subside Type		PART NO: 840SFM68-F1L1BHN5
SHEET: 1 OF 1		