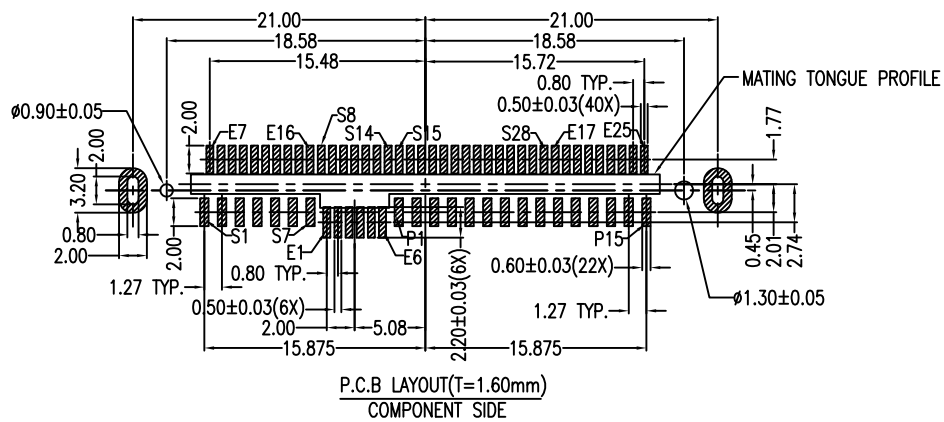
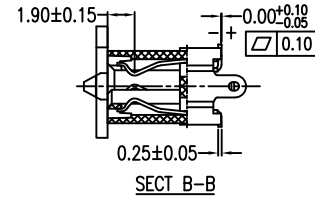
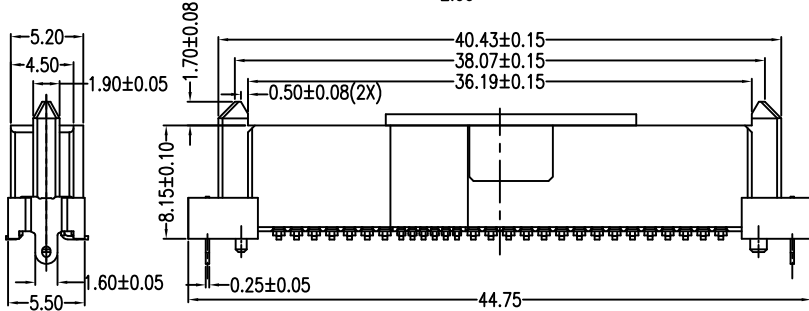
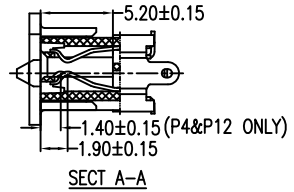
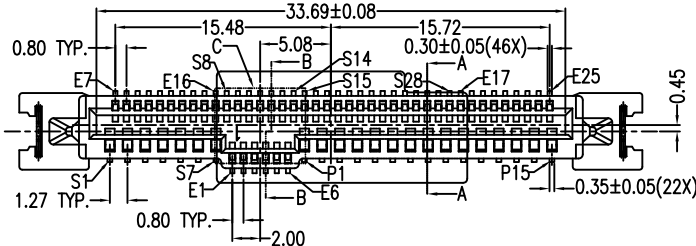
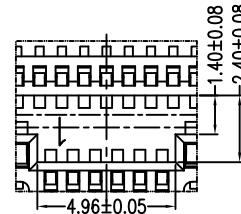
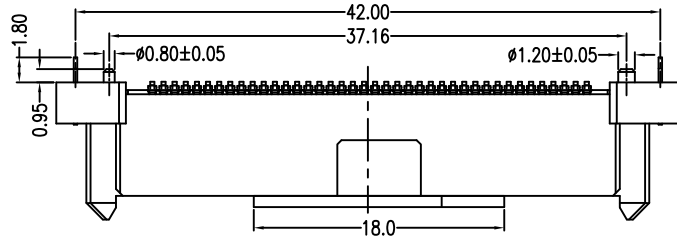


A
B
C
D
E
F

A
B
C
D
E
F



NOTES:

***Material**

Housing: LCP, UL 94V-0 rated,
Contact: Phosphor Bronze;
Plating: Au plating on contact area;
Sn(100u" Min) plating on solder tail;
Ni(50u" Min.) underplating overall.
Harpoon: Brass;
Plating: Sn(100u" Min) plating on solder tail;
Ni(50u" Min.) underplating overall.

***Mechanical**

Insertion Force: 59N max.
Withdrawal Force: 6N min.
Durability: 500 cycles

***Electrical Specification**

Current Rating: 1.5 Ampere per contact;
Contact Resistance: 30 mΩ max.
Insulation Resistance: 1000 MΩ min.
Dielectric Withstanding Voltage: 500 VAC.

***Environmental**


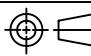
Operating Temperature: 0°C to +55°C

***How to order**

840SFF68-F1L1PHN5

- 5:Reel
- N:No Mark
- H:Halogen Free+RoHS-Compliance
- P:Phosphor Bronze
- 1:Black
- L:LCP
- 1:SMT Type(Straight Metal Posts)
- Au: A:1u" D:15u" F:30u"
- Number of Contacts
- Series No.

C	25.12.2020
REV	DATE

<p>PROPRIETARY NOTE: This document contains confidential information and proprietary to Rego Electronics and shall not be reproduced or disclosed to other documents or used for any purpose other than that for which was obtained without the expressed written consent of Rego Electronics.</p>		
.X ± 0.35	APPROVED: Chris	 http://www.rego.com.tw
.XX ± 0.25	CHECKED: Andy	
.XXX ± 0.15	DRAWN: Vic	
X* ± 3'		
	UNITS: mm	SCALE: NONE
	<p>PART NO: 840SFF68-F1L1PHN5</p>	
SHEET: 1 OF 10		