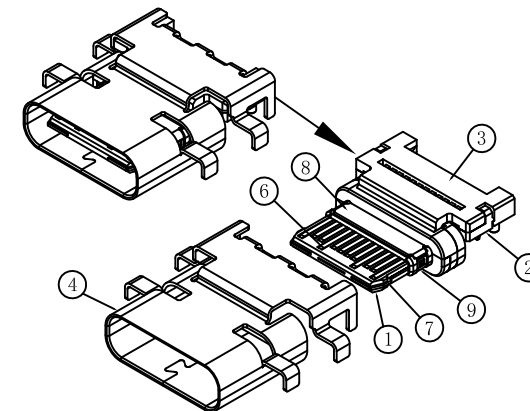
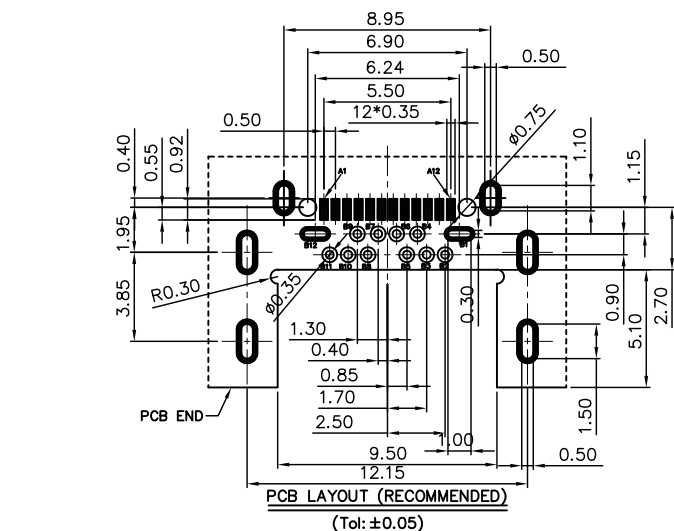
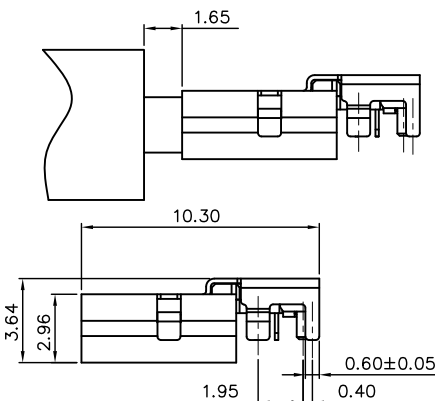
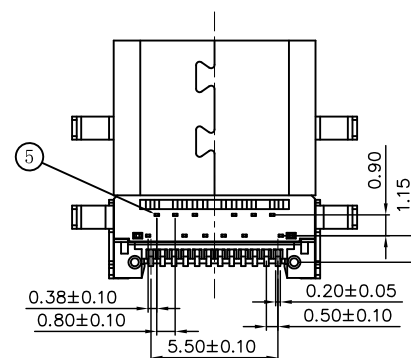
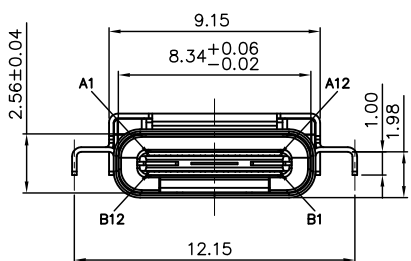
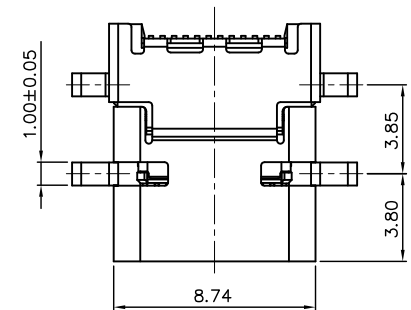


1 2 3 4 5 6 7 8 9 10

A  
B  
C  
D  
E  
F

PIN	Signal Name	PIN	Signal Name
A1	GND	B12	GND
A2	SSTXp1	B11	SSRXp1
A3	SSTXn1	B10	SSRXn1
A4	VBUS	B9	VBUS
A5	CC1	B8	SBU2
A6	Dp1	B7	Dn2
A7	Dn1	B6	Dp2
A8	SBU1	B5	CC2
A9	VBUS	B4	VBUS
A10	SSRXn2	B3	SSTXn2
A11	SSRXp2	B2	SSTXp2
A12	GND	B1	GND

ITEM	PARTS NAME	Q'TY	MATERIAL	FINISH/REMARK
項目	零件名稱	數量	材質	處理/備註
1	Insemold housing	1	SYNTHETIC RESIN	Black
2	12pin Insemold-(1)	1	SYNTHETIC RESIN	Black
3	12pin Insemold-(2)	1	SYNTHETIC RESIN	Black
4	SHELL	1	STAINLESS	Ni:50u" Min
5	12pin Contact-(DIP)	12	COPPER ALLOY	Gold flash on contact area 100u" Tin on solder tails, base Nickel: 50u"
6	12pin Contact-(SMT)	12	COPPER ALLOY	Gold flash on contact area 100u" Tin on solder tails, base Nickel: 50u"
7	Shield SHELL	1	STAINLESS	base Nickel: 50u" Min Tin: 80u" Min Over All
8	Ground plate-top	1	STAINLESS	Ni:50u" Min
9	Ground plate-bottom	1	STAINLESS	Ni:50u" Min



**SPECIFICATION**

**MATERIAL**

See drawing

**STANDARD DATA**

Rating current: 1.5A

**ELECTRICAL**

Insulator resistance: 100M ohms Min

Withstanding voltage: 100 VAC / minute

Contact resistance: 40 m ohms Max

**MECHANICAL**

Mating force: 5~20N.

Unmating force: 8~20N.

Durability: 10000 cycles Min.

**PART NO.**

894D 1 3 - 0824 24 001

**SERIES**

D=I/O Connector

**TYPE**

1=0.5mm pitch

CONTACT TYPE

3=SMT type

**MODEL NO.**


001=Type 01

**CONTACT NUMBER**

24=24position

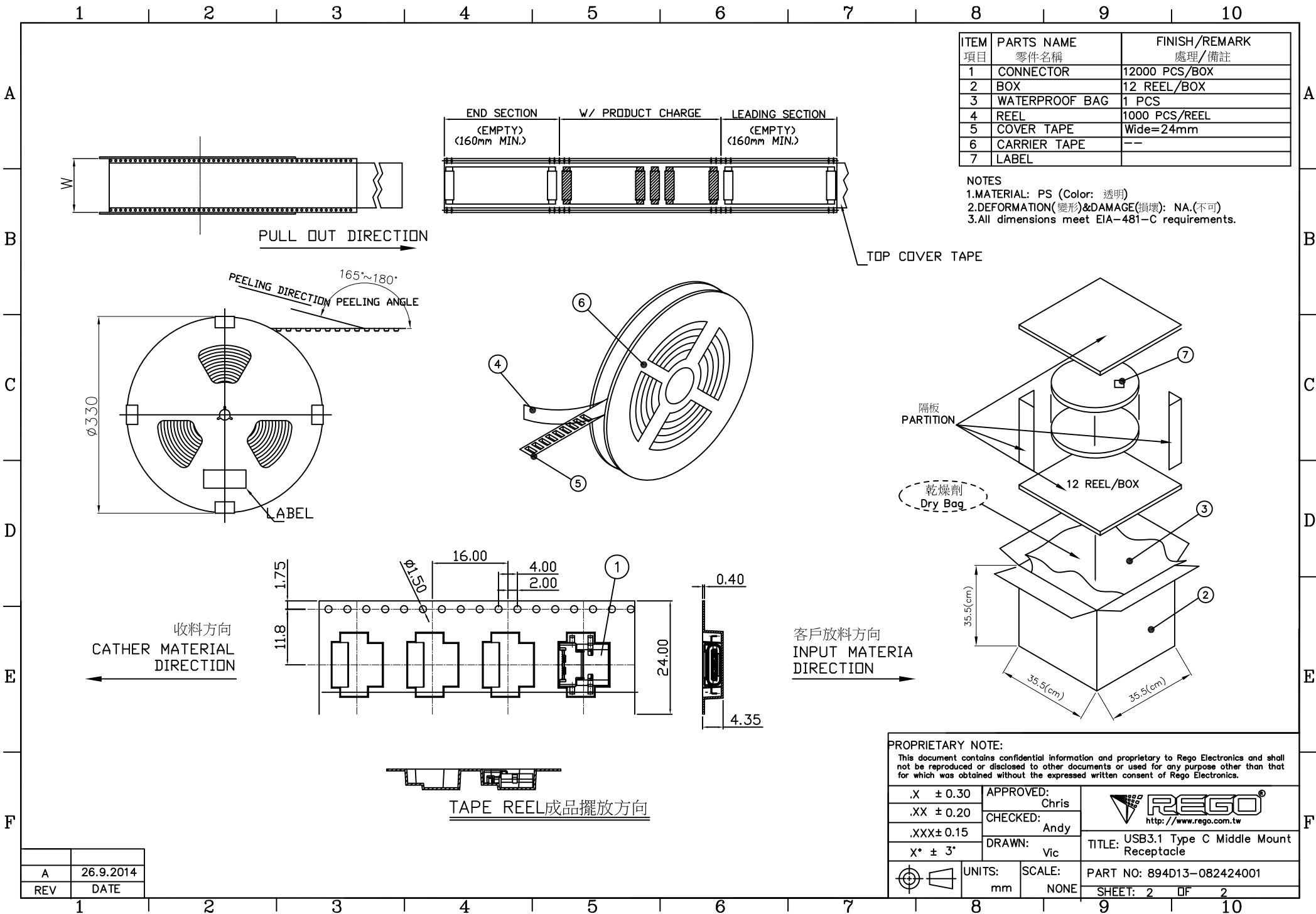
**PROPRIETARY NOTE:**

This document contains confidential information and proprietary to Rego Electronics and shall not be reproduced or disclosed to other documents or used for any purpose other than that for which was obtained without the expressed written consent of Rego Electronics.

.X ± 0.30	APPROVED:	 <a href="http://www.rego.com.tw">http://www.rego.com.tw</a>
.XX ± 0.20	Chris	
.XXX ± 0.15	ANDY	
X* ± 3*	DRAWN:	TITLE: USB3.1 Type C Middle Mount Receptacle
UNITS: mm	SCALE: NONE	PART NO: 894D13-082424001
		SHEET: 1 OF 2

A	26.9.2014
REV	DATE

1 2 3 4 5 6 7 8 9 10



A	26.9.2014
REV	DATE