

1 2 3 4 5 6 7 8 9 10

A

B

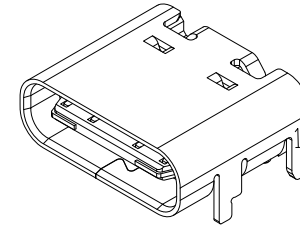
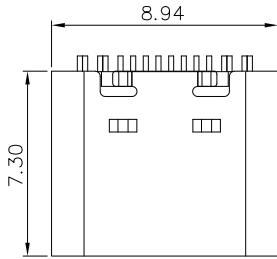
C

D

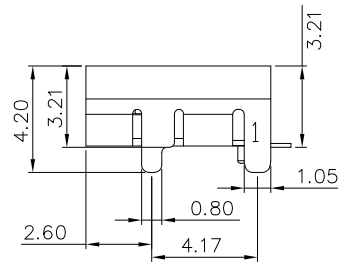
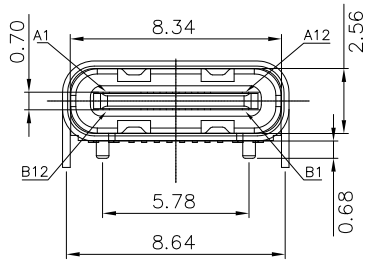
E

F

ITEM 項目	PARTS NAME 零件名稱	Q'TY 數量	MATERIAL 材質	FINISH/REMARK 處理/備註
1	Insemold housing	1	SYNTHETIC RESIN	Black(UL94V-0)
2	CONTACT	1	COPPER ALLOY	GOLD FLASH ON CONTACT AREA, 100u" Min TIN (LEAD FREE) ON SOLDER AREA, BASE Ni:50u"
3	SHELL	1	STAINLESS	Ni: 50u"
4	Shield	1	STAINLESS	-



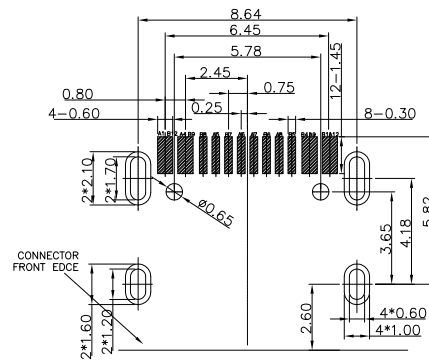
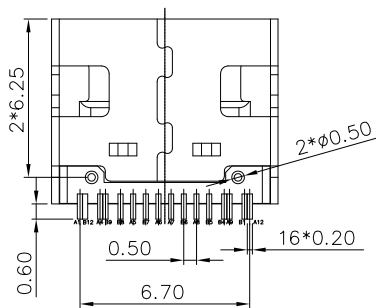
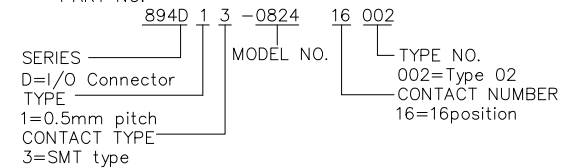
A1	GND	B12	GND
A4	VBUS	B9	VBUS
A5	CC1	B8	SBU2
A6	DP1	B7	DN2
A7	DN1	B6	DP2
A8	SBU1	B5	CC2
A9	VBUS	B4	VBUS
A12	GND	B1	GND
PIN	SIGNAL NAME	PIN	SIGNAL NAME



SPECIFICATION

- MATERIAL: See drawing
- STANDARD DATA
 - Rating current: 3.0A for VBUS (i.e., pins A4, A9, B4, B9); 1.25A for Vconn and GND (i.e., pins B5, A1, A12, B1, B12); 0.25A for all the other contacts.
- ELECTRICAL
 - Insulator resistance: 100M ohms Min. @250V DC
 - Withstanding voltage: 100 VAC / minute
 - Contact resistance: initial 40mohms Max. after 50mohms Max.
- MECHANICAL
 - Mating force: 5~20N
 - Unmating force : Initial 8~20N After 1000cycles 6~20N
 - Durability: 10000 cycles Min.


PART NO.



RECOMMENDED P.C.B. LAYOUT
 TOLERANCE UNSPECIFIED ±0.05mm

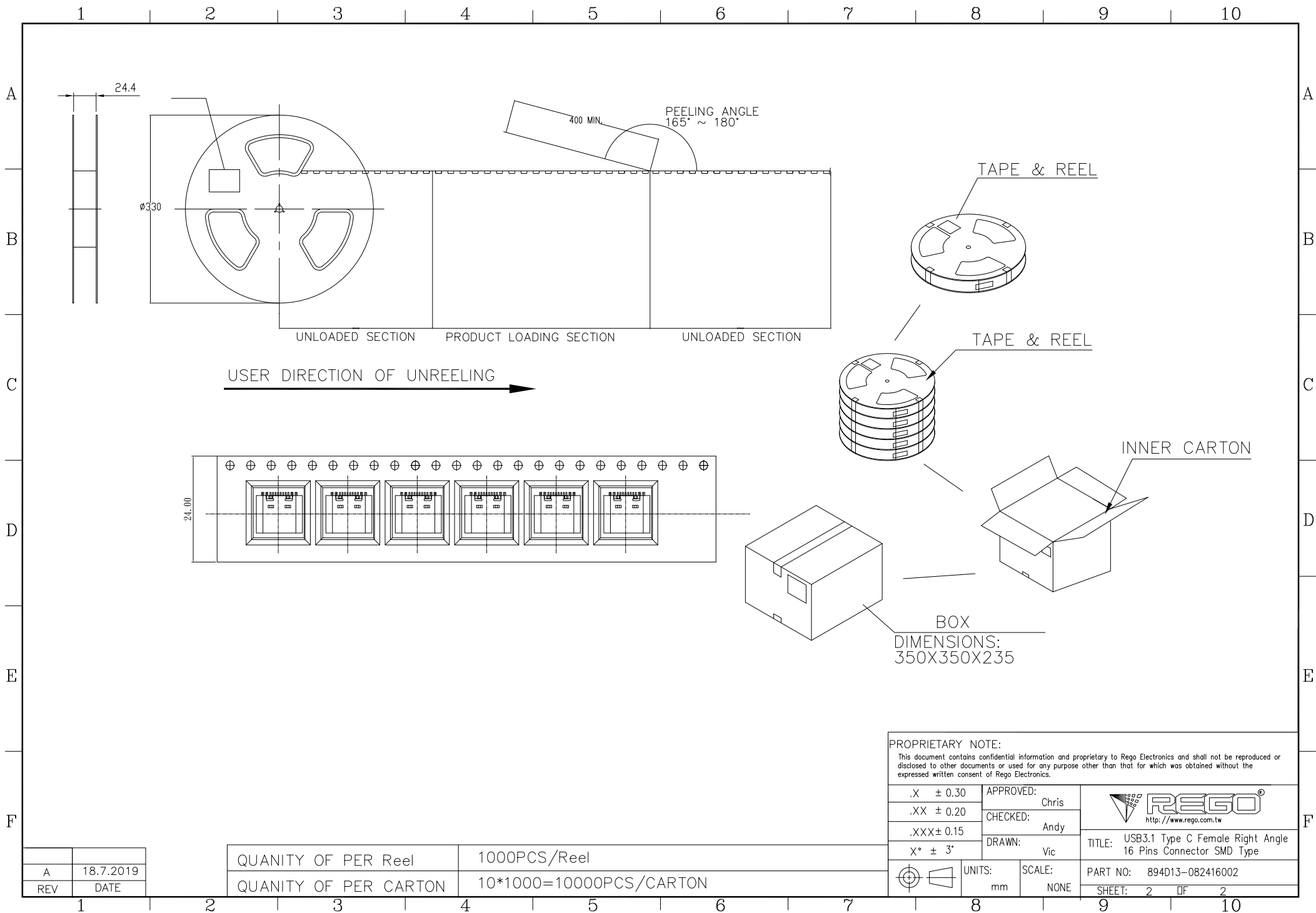
PROPRIETARY NOTE:

This document contains confidential information and proprietary to Rego Electronics and shall not be reproduced or disclosed to other documents or used for any purpose other than that for which was obtained without the expressed written consent of Rego Electronics.

.X ± 0.30	APPROVED: Chris	 http://www.rego.com.tw
.XX ± 0.20	CHECKED: Andy	
.XXX ± 0.15	DRAWN: Vic	
X° ± 3'	UNITS: mm	SCALE: NONE
TITLE: USB3.1 Type C Female Right Angle 16 Pins Connector SMD Type		PART NO: 894D13-082416002
SHEET: 1 OF 2		

A	18.7.2019
REV	DATE

1 2 3 4 5 6 7 8 9 10


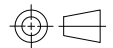


USER DIRECTION OF UNREELING →

BOX
DIMENSIONS:
350X350X235

PROPRIETARY NOTE:

This document contains confidential information and proprietary to Rego Electronics and shall not be reproduced or disclosed to other documents or used for any purpose other than that for which was obtained without the expressed written consent of Rego Electronics.

.X ± 0.30	APPROVED: Chris	 http://www.rego.com.tw
.XX ± 0.20	CHECKED: Andy	
.XXX ± 0.15	DRAWN: Vic	
X° ± 3'		
	UNITS: mm	SCALE: NONE
	TITLE: USB3.1 Type C Female Right Angle 16 Pins Connector SMD Type PART NO: 894D13-082416002 SHEET: 2 OF 2	

A	18.7.2019
REV	DATE

QUANTITY OF PER Reel	1000PCS/Reel
QUANTITY OF PER CARTON	10*1000=10000PCS/CARTON