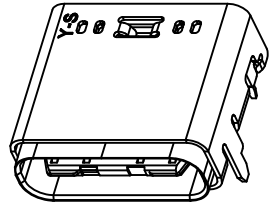
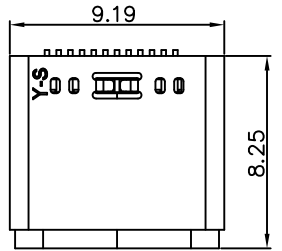
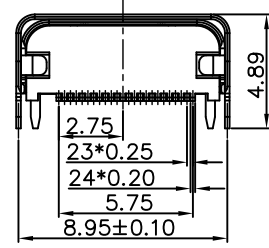
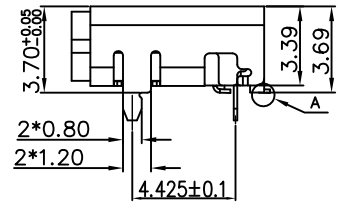
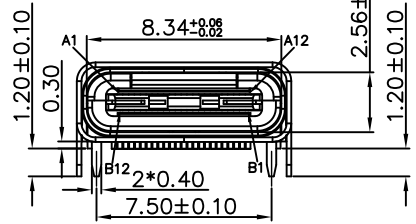


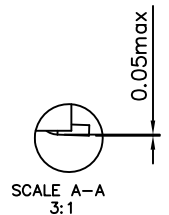
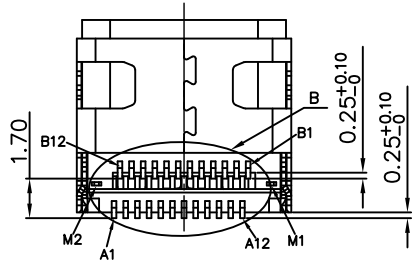
A



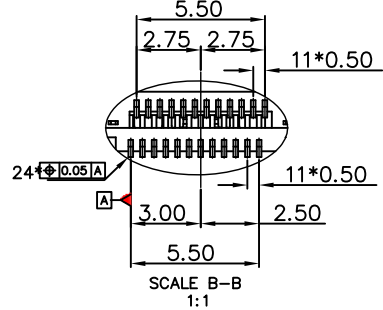
B



C



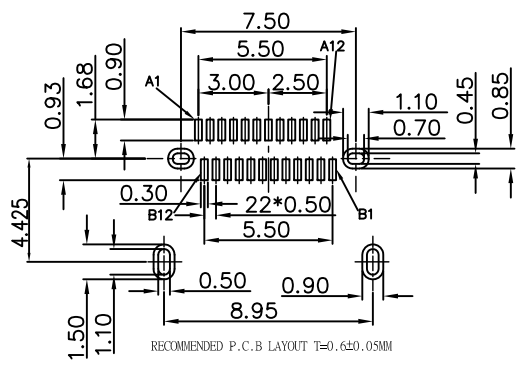
SCALE A-A 3:1



SCALE B-B 1:1

D

E



RECOMMENDED P.C.B LAYOUT T=0.650, 0.5MM

F

A	09.9.2016
REV	DATE

PRODUCT SPECIFICATION

Material:  
 PLASTIC:Glass-Filled Thermoplastic high temperature LCP  
 G/F 30% color:BLACK  
 SHELL: SUS 304 ,T=0.20MM.  
 CONTACT: Phosphor Bronze, T=0.15MM.  
 EMC PAD: SUS 304, T=0.15MM.  
 MID-PLATE: SUS 304, T=0.15MM.  
 PLATING:  
 SHELL:HOOK PLATING 80u" Ni.  
 TERMINAL:30u" Min Gold on contact area,2u" Min Gold on solder tails,base Nickel: 80u" .

STANDARD DATA

Rating current:5.0A for VBUS (i.e.,pins A4,A9,B4,B9)  
 1.25A for Vconn and GND (i.e.,pins B5,A1,A12,B1,B12)  
 0.25A for all the other contacts

ELECTRICAL

Insulator resistance: 100M ohms Min  
 Withstanding voltage: 100 VAC / minute  
 Contact resistance: 40 m ohms Max

MECHANICAL

Mating force: 5~20N.  
 Unmating force: 8~20N.  
 Durability: 10000 cycles Min.


Ordering Information

812UC184J -  $\frac{24}{a} \frac{2}{b} \frac{3}{c} \frac{1}{d} \frac{1}{e} \frac{4}{f} SS$

- a. No. Of Pins  
24: 24 positions
- b. Contact Type  
1: Male  
2: Female
- c. Contact Plating  
0: Gold flash selective gold  
1: 5u" selective gold over 50u" nickel  
2: 15u" selective gold over 50u" nickel  
3: 30u" selective gold over 50u" nickel
- d. Shell Type  
1: Nickel
- e. Insulator Color  
1: Black (LCP)
- f.Contact Type(Signal Pin)  
1: SMT TYPE(Sink type)  
2: Edge Type  
3: Waveless Type  
4: SMT Type (Two-Row Type)

PIN	Signal Name	PIN	Signal Name
A1	GND	M2	GND
A2	SSTXp1	B12	GND
A3	SSTXn1	B11	SSRXp1
A4	VBUS	B10	SSRXn1
A5	CC1	B8	SBU2
A6	Dp1	B7	Dn2
A7	Dn1	B6	Dp2
A8	SBU1	B5	CC2
A9	VBUS	B4	VBUS
A10	SSRXn2	B3	SSTXn2
A11	SSRXp2	B2	SSTXp2
A12	GND	B1	GND
		M1	GND

**PROPRIETARY NOTE:**  
 This document contains confidential information and proprietary to Rego Electronics and shall not be reproduced or disclosed to other documents or used for any purpose other than that for which was obtained without the expressed written consent of Rego Electronics.

.X ± 0.38	APPROVED: Chris	 <a href="http://www.rego.com.tw">http://www.rego.com.tw</a>
.XX ± 0.25	CHECKED: Andy	
.XXX±0.15	DRAWN: Vic	
X* ± 3*	UNITS: mm	SCALE: NONE
PART NO: 812UC184J-2423114SS		SHEET: 1 OF 1