

1 2 3 4 5 6 7 8 9 10

A

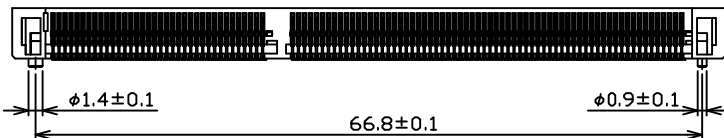
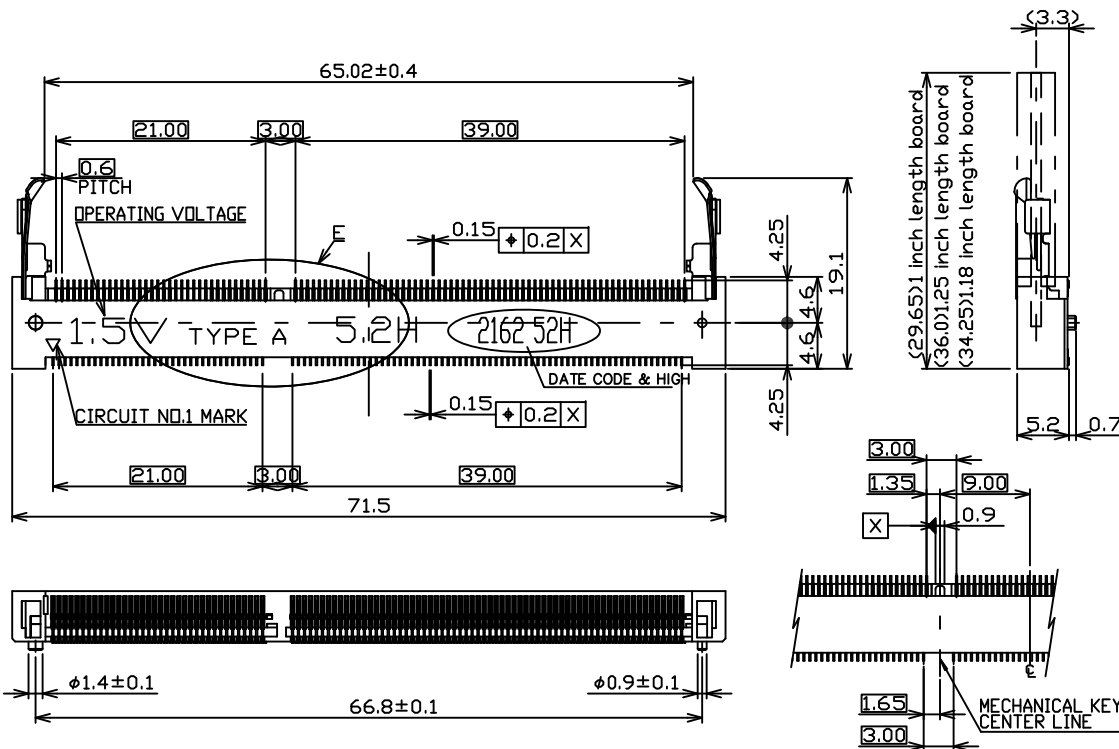
B

C

D

E

F



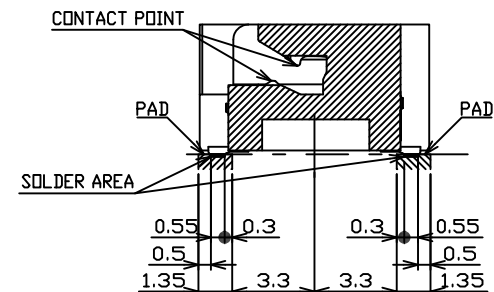
MUST BE MEASURED FLOATING AMOUNT OF CONTACT TAILS FROM DATUM SURFACE IS 0.1mm MAX.

NOTES:


- 1.MATERIAL:
HOUSING: LCP, UL94V-0, Black
CONTACT: PHOSPHOR BRONZE (C5191)
LATCH: STAINLESS (SUS301)
- 2.FINISH:
CONTACT:
CONTACT AREA: G/F GOLD PLATED
SOLDER AREA: G/F GOLD PLATED
UNDER PLATING: NICKEL PLATED.
LATCH:
SOLDER AREA: G/F GOLD PLATED
UNDER PLATING: NICKEL PLATED.

3.SPECIFICATION:

- CURRENT RATING: 0.5A / (1PIN)
- VOLTAGE RATING: 25V AC
- DIELECTRIC WITHSTANDING: 125V AC FOR 1 MINUTE
- CONTACT RESISTANCE: 60mΩ Max.
- INSULATION RESISTANCE: 500MΩ Min
- OPERATING TEMPERATURE: -40°C to +85°C
- DURABILITY: 25 CYCLES MIN.

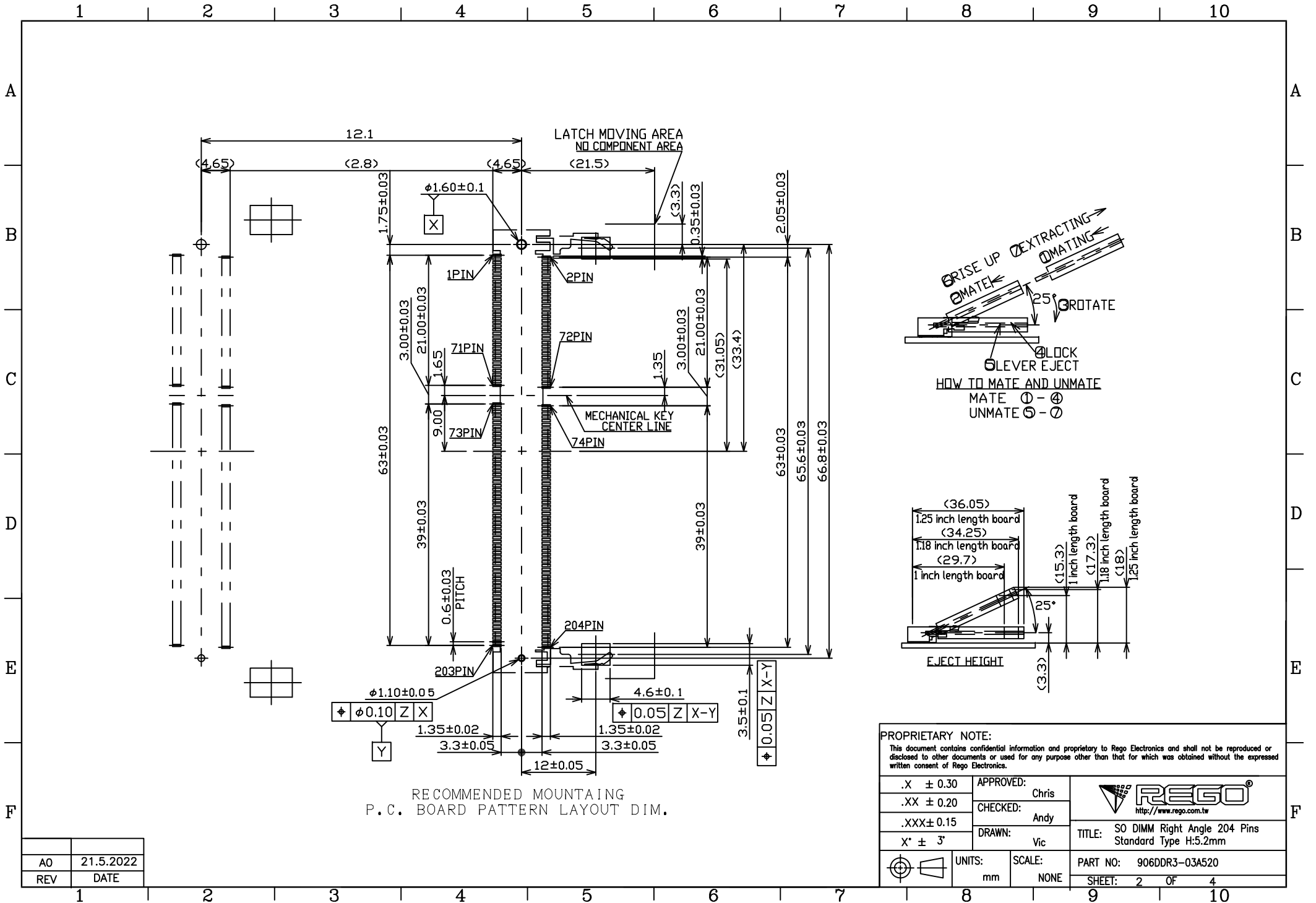


DETAIL E
MECHANICAL KEY TYPE

<p>PROPRIETARY NOTE: This document contains confidential information and proprietary to Rego Electronics and shall not be reproduced or disclosed to other documents or used for any purpose other than that for which was obtained without the expressed written consent of Rego Electronics.</p>		
.X ± 0.30	APPROVED: Chris	 http://www.rego.com.tw TITLE: SO DIMM Right Angle 204 Pins Standard Type H:5.2mm
.XX ± 0.20	CHECKED: Andy	
.XXX ± 0.15	DRAWN: Vic	
X* ± 3'		
UNITS: mm	SCALE: NONE	PART NO: 906DDR3-03A520
		SHEET: 1 OF 4

A0	21.5.2022
REV	DATE

1 2 3 4 5 6 7 8 9 10

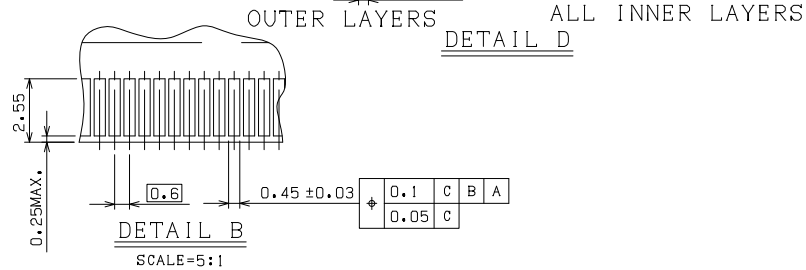
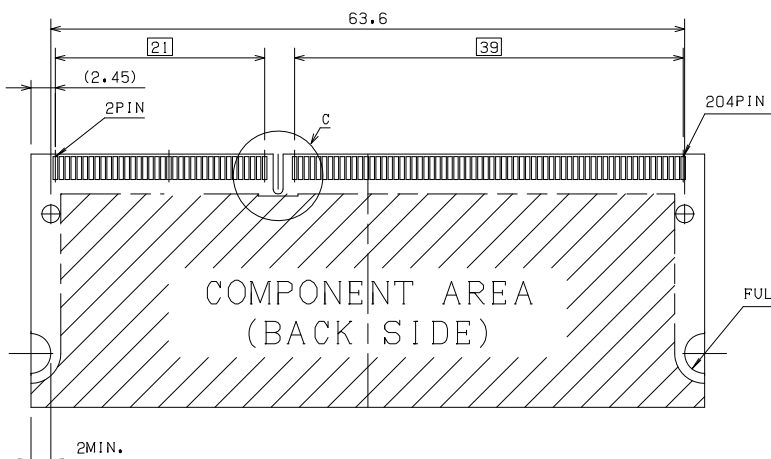
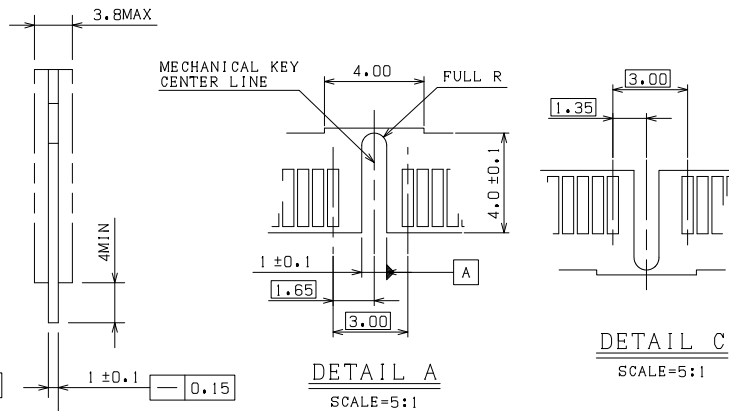
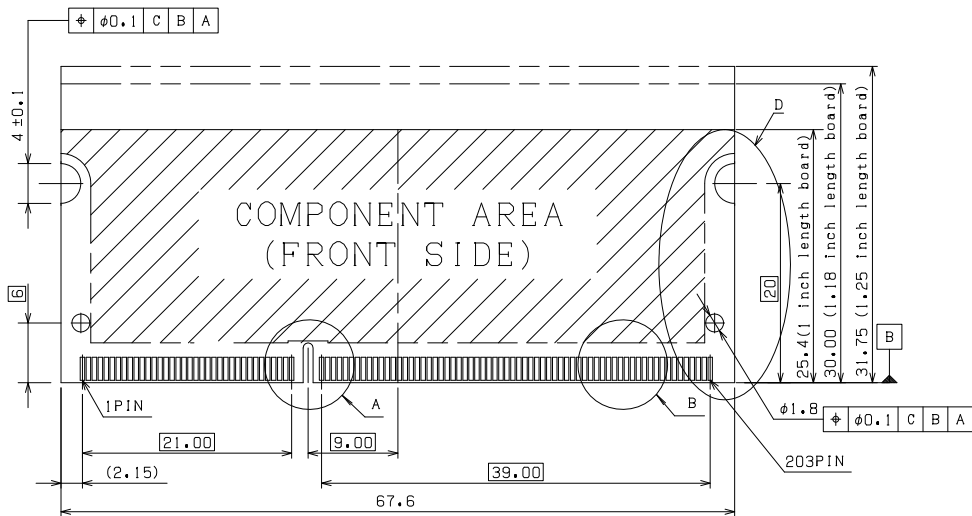


AO	21.5.2022
REV	DATE


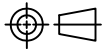
1 2 3 4 5 6 7 8 9 10

A
B
C
D
E
F

A
B
C
D
E
F



RECOMMENDED MATING
P.C. BOARD DIM.

PROPRIETARY NOTE: This document contains confidential information and proprietary to Rego Electronics and shall not be reproduced or disclosed to other documents or used for any purpose other than that for which was obtained without the expressed written consent of Rego Electronics.		
.X ± 0.30	APPROVED: Chris	 http://www.rego.com.tw
.XX ± 0.20	CHECKED: Andy	
.XXX ± 0.15	DRAWN: Vic	
X' ± 3'		TITLE: SO DIMM Right Angle 204 Pins Standard Type H:5.2mm
 UNITS: mm SCALE: NONE	PART NO: 906DDR3-03A520	
	SHEET: 3 OF 4	

AO	21.5.2022
REV	DATE

1 2 3 4 5 6 7 8 9 10

1 2 3 4 5 6 7 8 9 10

A

B

C

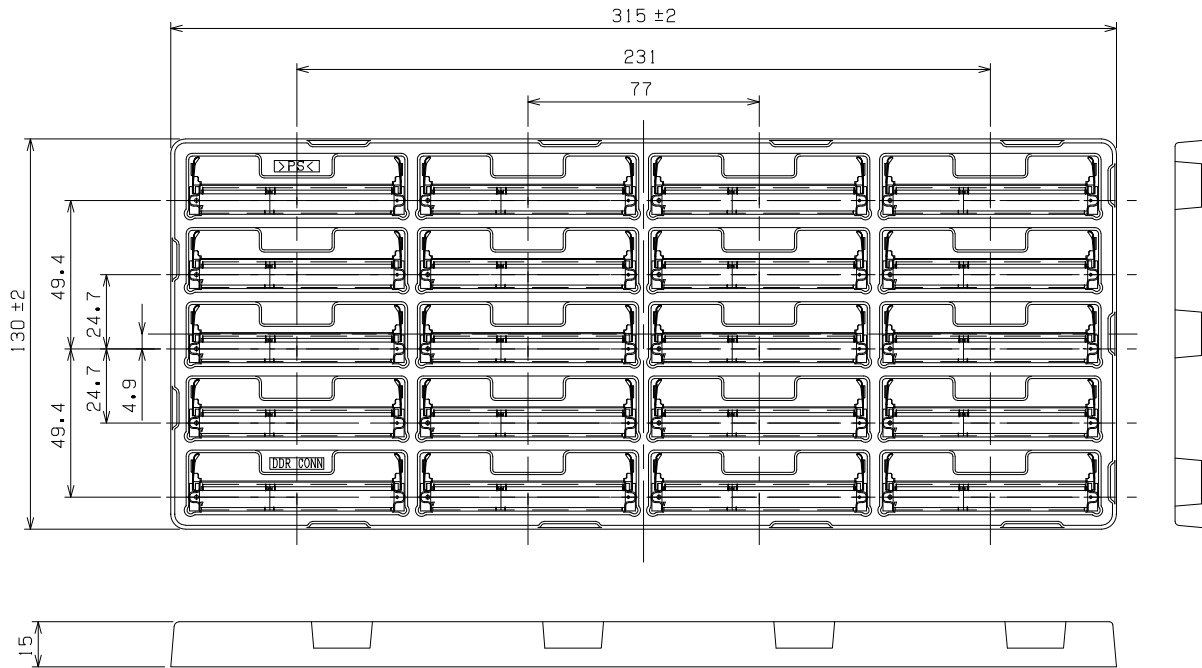
D

E

F

NOTES:



1. PACKING STYLE: 20 PCS/Tray
200 PCS/INNER CARTON
600 PCS/OUTER CARTON
2. MATERIAL: Tray: PET



SOFT TRAY PACKAGING

PROPRIETARY NOTE:

This document contains confidential information and proprietary to Rego Electronics and shall not be reproduced or disclosed to other documents or used for any purpose other than that for which was obtained without the expressed written consent of Rego Electronics.

.X ± 0.30	APPROVED: Chris	 http://www.rego.com.tw
.XX ± 0.20	CHECKED: Andy	
.XXX ± 0.15	DRAWN: Vic	
X* ± 3'		TITLE: SO DIMM Right Angle 204 Pins Standard Type H:5.2mm
	UNITS: mm	SCALE: NONE
	PART NO: 906DDR3-03A520	
SHEET: 4 OF 4		

A0	21.5.2022
REV	DATE

1 2 3 4 5 6 7 8 9 10