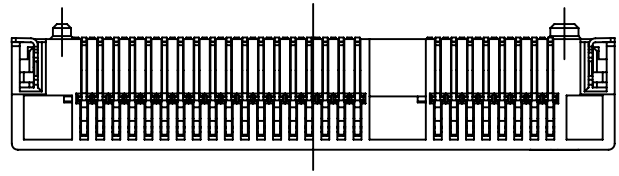


1 2 3 4 5 6 7 8 9 10

PRODUCT NO.	ITEM	PART NAME	Q'TY	MATERIAL	PLATING
906MPCIE-02XX0	1	BODY	1	LCP	
	2	CONTACT	52	PHOSPHOR BRONZE	GOLD PLATED
	3	HOLD DOWN	2	BRASS	TIN 100u"

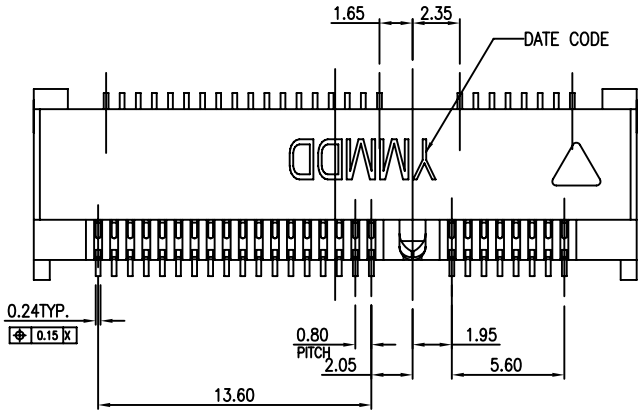
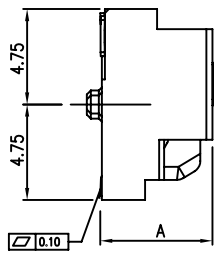
A



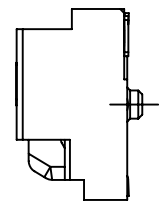
B

P/N	A±0.25	B±0.25
906MPCIE-02400(4.0H)	4.0	2.2
906MPCIE-02520(5.2H)	5.2	3.4
906MPCIE-02560(5.6H)	5.6	3.8
906MPCIE-02800(8.0H)	8.0	6.2
906MPCIE-02920(9.2H)	9.2	7.4

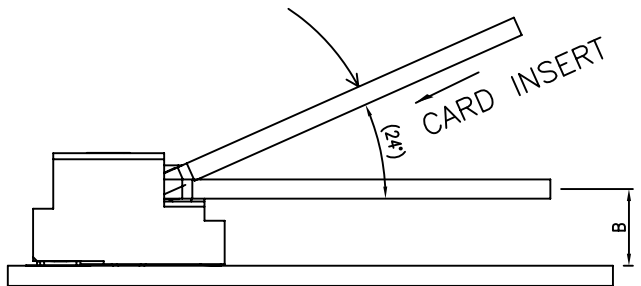
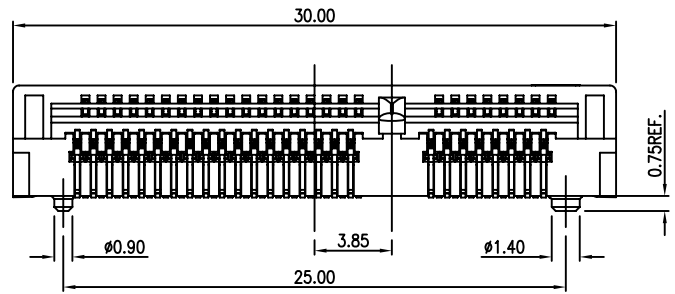
C



D


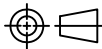


E



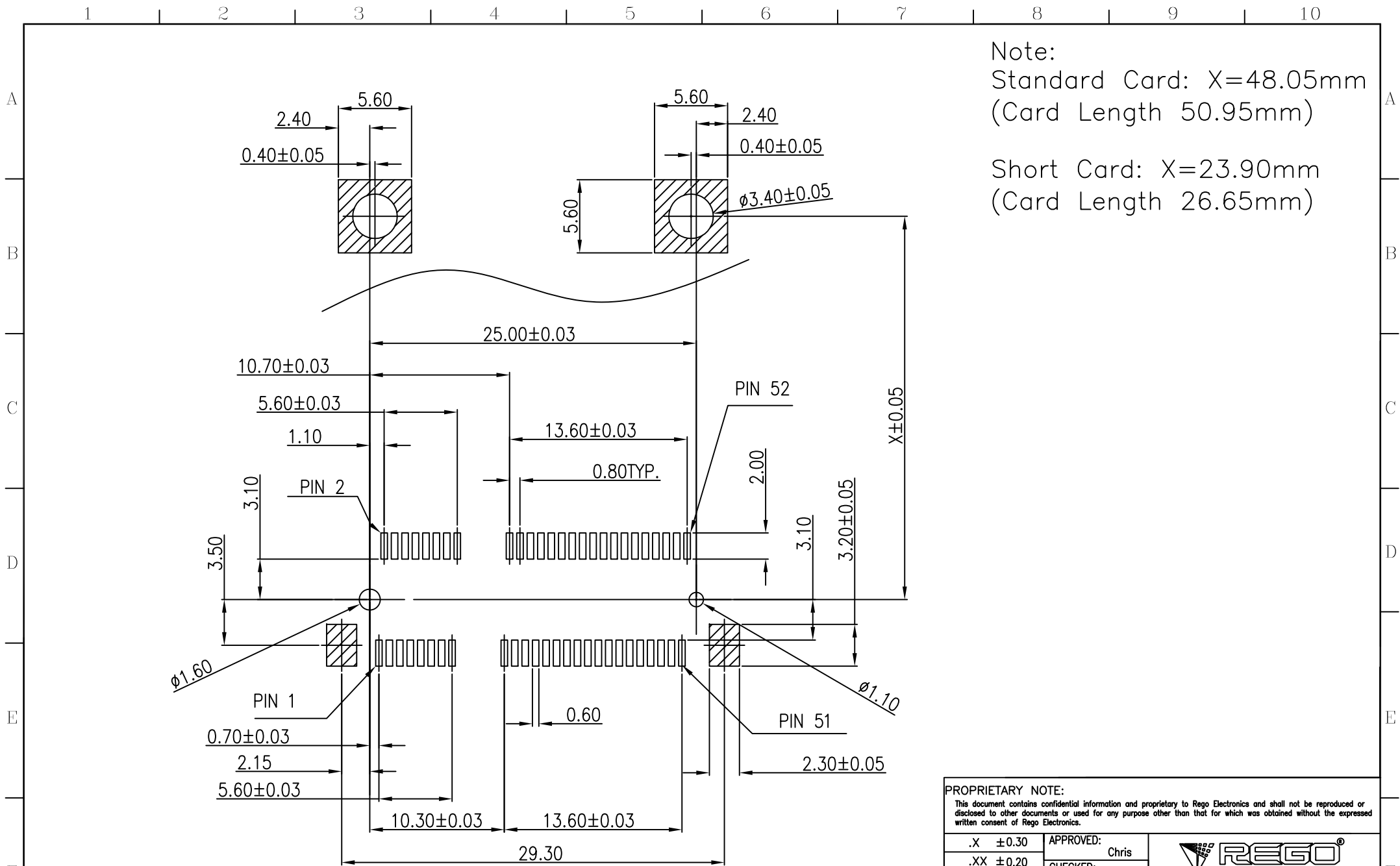
F

PROPRIETARY NOTE:
 This document contains confidential information and proprietary to Rego Electronics and shall not be reproduced or disclosed to other documents or used for any purpose other than that for which was obtained without the expressed written consent of Rego Electronics.

.X ±0.30	APPROVED: Chris	 http://www.rego.com.tw
.XX ±0.20	CHECKED: Andy	
.XXX±0.15	DRAWN: Vic	
X' ± 3'	TITLE: MINI PCI EXPRESS CONNECTOR	
	UNITS: mm	SCALE: NONE
	PART NO: 906MPCIE-02xx0	SHEET: 1 OF 3

A2	24.3.2018
REV	DATE


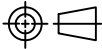
1 2 3 4 5 6 7 8 9 10



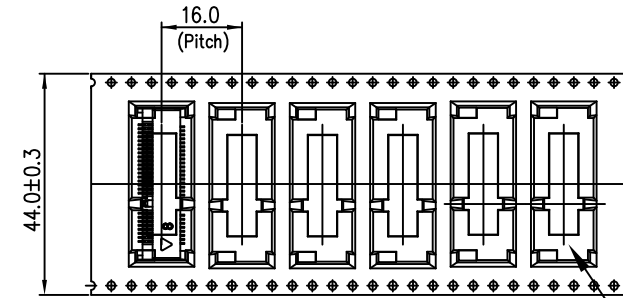
Note:
 Standard Card: X=48.05mm
 (Card Length 50.95mm)
 Short Card: X=23.90mm
 (Card Length 26.65mm)

Recommended P. C. Board Layout.

PROPRIETARY NOTE:
 This document contains confidential information and proprietary to Rego Electronics and shall not be reproduced or disclosed to other documents or used for any purpose other than that for which was obtained without the expressed written consent of Rego Electronics.

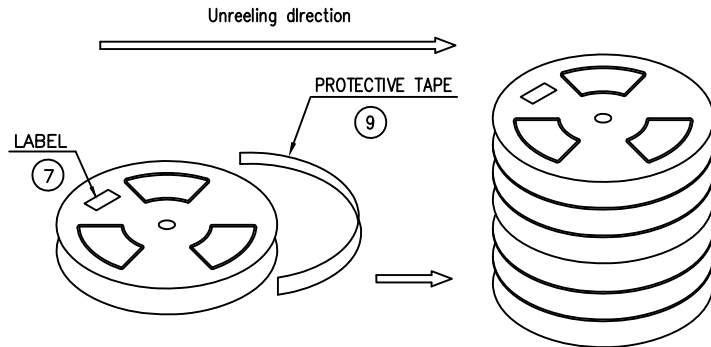
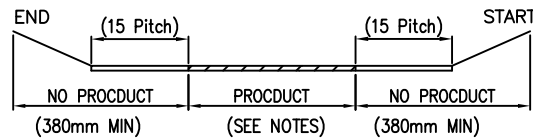
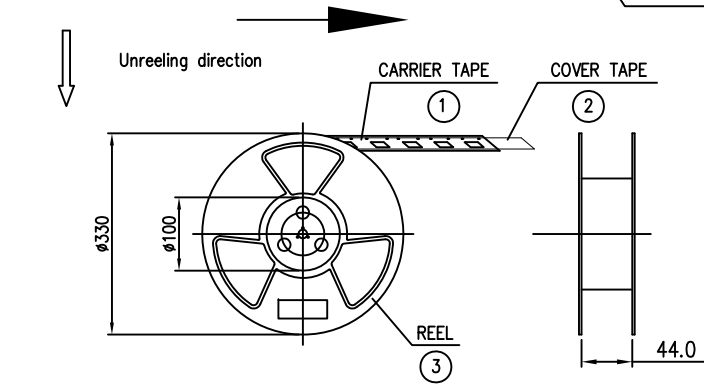
.X ±0.30	APPROVED: Chris	 http://www.rego.com.tw
.XX ±0.20	CHECKED: Andy	
.XXX ±0.15	DRAWN: Vic	
X' ± 3'		TITLE: MINI PCI EXPRESS CONNECTOR
	UNITS: mm	SCALE: NONE
		PART NO: 906MPCIE-02xx0
		SHEET: 2 OF 3

A2	24.3.2018
REV	DATE



MINI PCI EXPRESS

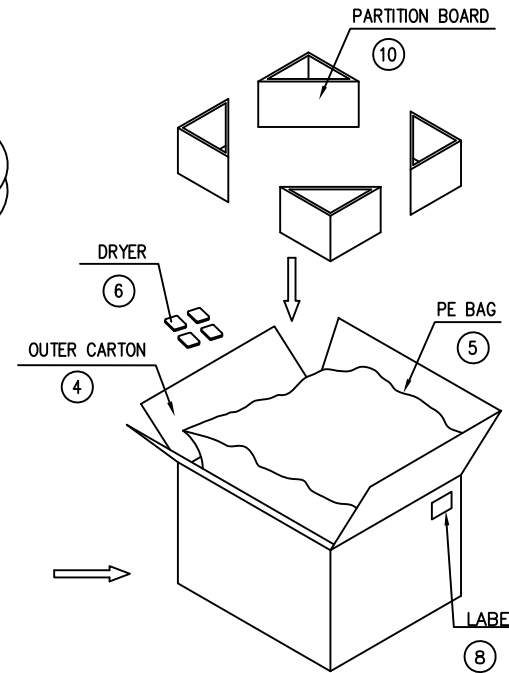
PART NO.	PITCH	16.0	20.0
1 906MPCIE-02400(4.0H)		✓	
2 906MPCIE-02520(5.2H)		✓	
3 906MPCIE-02560(5.6H)		✓	
4 906MPCIE-02800(8.0H)		✓	
5 906MPCIE-02920(9.2H)			✓



NOTES:
1. PACKING STYLE


4.0H	700 PCS/REEL 4200 PCS/OUTER CARTON
5.2H	600 PCS/REEL 3600 PCS/OUTER CARTON
5.6H	550 PCS/REEL 3300 PCS/OUTER CARTON
8.0H	400 PCS/REEL 2400 PCS/OUTER CARTON
9.2H	300 PCS/REEL 1800 PCS/OUTER CARTON

2. MATERIAL CARRIER TAPE: PS BLACK
COVER TAPE: PET FILM
REEL: PLASTIC
3. PEEL STRENGTH OF COVER TAPE: 20-80g
(PEEL SPEED 300mm/MINUTE).



PROPRIETARY NOTE:

This document contains confidential information and proprietary to Rego Electronics and shall not be reproduced or disclosed to other documents or used for any purpose other than that for which was obtained without the expressed written consent of Rego Electronics.

.X ±0.30	APPROVED: Chris	 http://www.rego.com.tw
.XX ±0.20	CHECKED: Andy	
.XXX ±0.15	DRAWN: Vic	
X' ± 3'		TITLE: MINI PCI EXPRESS CONNECTOR
UNITS: mm	SCALE: NONE	PART NO: 906MPCIE-02xx0
		SHEET: 3 OF 3

A2	24.3.2018
REV	DATE