

**Material and Plating:**  
 Housing: LCP, UL94V-0, Black.  
 Signal Contacts : Phosphor Bronze.  
 Gold Plated on Contact Area and 80u" Min Tin Plated on Solder Tail over nickel 50u" Min .  
 Ground Contacts : Phosphor Bronze.  
 Gold Plated on Contact Area and 80u" Min Tin Plated on Solder Tail over nickel 50u" Min .

**Electrical Characteristics:**  
 Current Rating: Signal: 3A Per Contact With 3 Adjacent Contacts (UL).  
 Ground: 25A Per Contact With 1 Contact.  
 Voltage Rating: 125V AC.  
 Dielectric Withstanding Voltage: 675V AC For 1 minute.  
 Insulator Resistance: 5000MΩ min at DC 500V.  
 Contact Resistance: Signal Pin: 45mΩ max .  
 Ground Pin: 15mΩ max .

**\*RoHS Compliant**

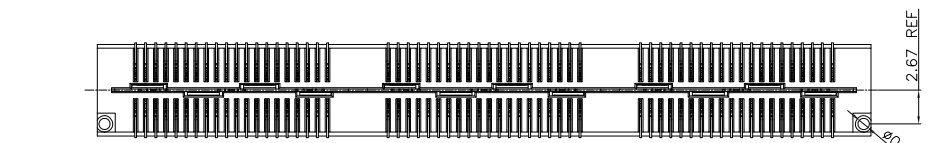
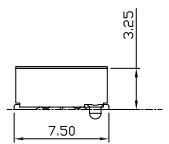
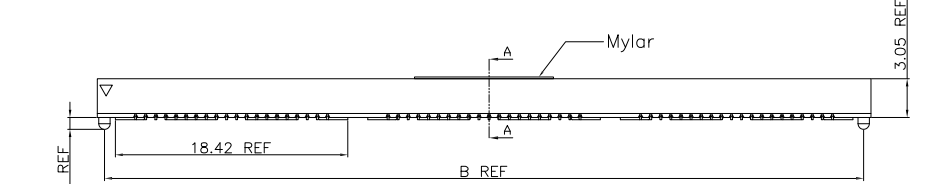


TABLE 1

NO OF POSITIONS	COPLANARITY (INCLUDING GP)
-40 THRU -80	0.10
-120, -160, -200	0.15

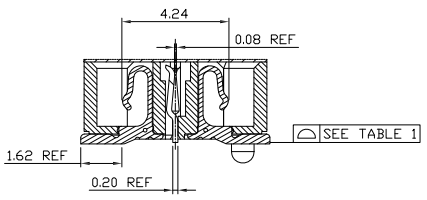
TABLE 2

"\*"Available Position

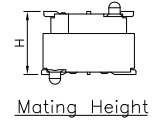
Code	Pos.	Dimension	
H1		A	B
*	40	21.27	20.13
	80	41.28	40.13
	120	61.28	60.13
	160	81.28	80.14
	200	101.28	100.14

5mm Stack Height	Rated@3dB Insertion Loss	
	With PCB effects	W/O PCB effects
Single-Ended Signaling	9GHz / 18Gbps	9GHz / 18Gbps
Differential Pair Signaling	8GHz / 16Gbps	14GHz / 28Gbps

FIG 1 -P(With Post)



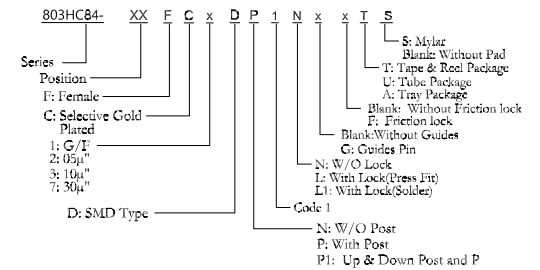
Sectional A-A Scale 2:1



Mating Height

**Note :**  
 "1":With Contact  
 "0":Without Contact

PIN	02	04	06	08	10	12	14	16	18	20	22	24	26	28	30	32	34	36	38	4
PIN	01	03	05	07	09	11	13	15	17	19	21	23	25	27	29	31	33	35	37	3
	1	1	1	1	1	1	1	1	1	1	1	1	1	1	1	1	1	1	1	1
PIN	42	44	46	48	50	52	54	56	58	60	62	64	66	68	70	72	74	76	78	8
PIN	41	43	45	47	49	51	53	55	57	59	61	63	65	67	69	71	73	75	77	7
	1	1	1	1	1	1	1	1	1	1	1	1	1	1	1	1	1	1	1	1
PIN	82	84	86	88	90	92	94	96	98	100	102	104	106	108	110	112	114	116	118	12
PIN	81	83	85	87	89	91	93	95	97	99	101	103	105	107	109	111	113	115	117	11
	1	1	1	1	1	1	1	1	1	1	1	1	1	1	1	1	1	1	1	1



**PROPRIETARY NOTE:**  
 This document contains confidential information and proprietary to Rego Electronics and shall not be reproduced or disclosed to other documents or used for any purpose other than that for which was obtained without the expressed written consent of Rego Electronics.

X10	12.11.2019
REV	DATE

Code:1~10 (B)	1	2	3	4	5	6	7	8	9	10
Male	4.267	7.267	10.267	15.265	18.263	21.260	24.231	29.260	13.258	14.239
Code:1	1	1	1	1	1	1	1	1	1	1
Female	3.25	3.25	3.25	3.25	3.25	3.25	3.25	3.25	3.25	3.25
Mating Height(H)	5.00	8.00	11.00	16.00	19.00	22.00	25.00	30.00	14.00	15.00

.X ± 0.30	APPROVED: Chris	 http://www.rego.com.tw
.XX ± 0.20	CHECKED: Andy	
.XXX ± 0.15	DRAWN: Vic	TITLE: High Speed Board to Board Pitch 0.8mm Socket
X* ± 3°	UNITS: mm	SCALE: NONE
	PART NO: 803HC84-xxFCxDP1NxTxS	
SHEET: 1		OF 6