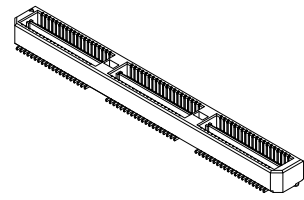
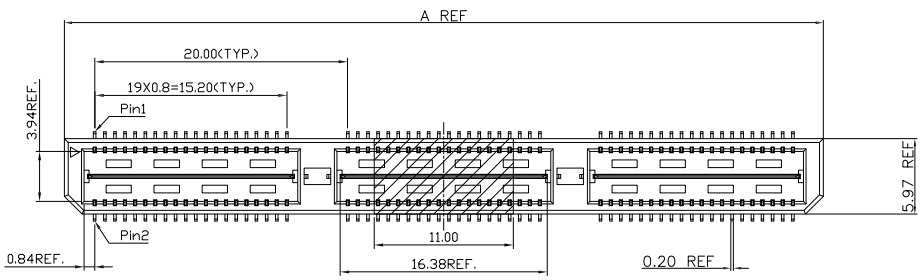


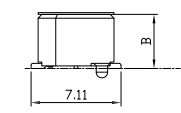
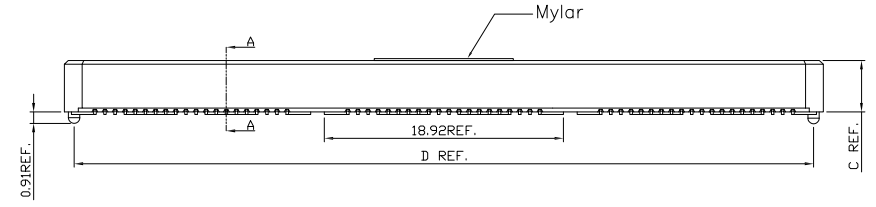
1 2 3 4 5 6 7 8 9 10

A



**Material and Plating:**  
 Housing: LCP, UL94V-0, Black.  
 Signal Contacts : Phosphor Bronze.  
 Gold Plated on Contact Area and 80u" Min Tin Plated on Solder Tail over nickel 50u" Min .  
 Ground Contacts : Brass.  
 Gold Plated on Contact Area and 80u" Min Tin Plated on Solder Tail over nickel 50u" Min .  
**Electrical Characteristics:**  
 Current Rating: Signal: 3A Per Contact With 3 Adjacent Contacts (UL).  
 Ground: 25A Per Contact With 1 Contact.  
 Voltage Rating: 125V AC .  
 Dielectric Withstanding Voltage: 675V AC For 1 minute.  
 Insulator Resistance: 5000MΩ min at DC 500V.  
 Contact Resistance: Signal: 45mΩ max .  
 Ground: 15mΩ max .  
 Operating Temperature: -55°C ~ +125°C .  
**\*RoHS Compliant**

B



C

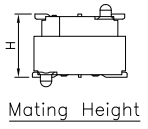
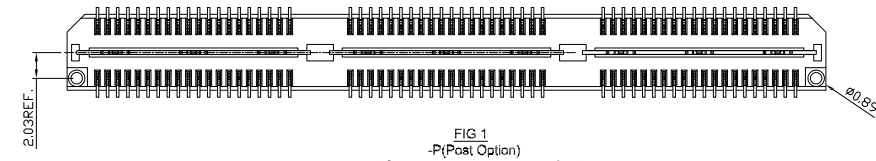
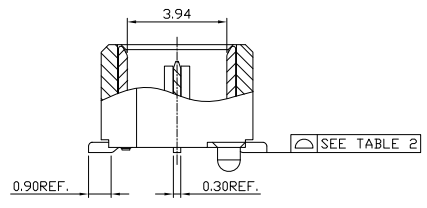


FIG 1  
 -P(Post Option)  
 (Only Available on Code 1, 2 & 3)

Code	B	C
1	4.267	4.064
2	7.267	7.064
3	10.267	10.063

D

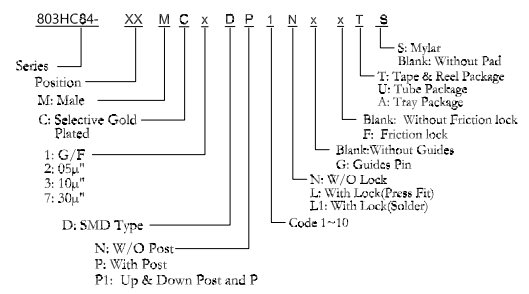


Sectional A-A  
 Scale 2:1

Note :  
 "1":With Contact  
 "0":Without Contact

NO OF POSITIONS	COPLANARITY (INCLUDING GP)
-40 THRU -120	0.10
-160 & -200	0.15

5mm Stack Height	Rated@3dB Insertion Loss	
	With PCB effects	W/O PCB effects
Single-Ended Signaling	9GHz / 18Gbps	9GHz / 18Gbps
Differential Pair Signaling	8GHz / 16Gbps	14GHz / 28Gbps



E

Code	Pos.	Dimension	
1	40	A	D
*	80	40.01	38.48
	120	60.01	58.48
	160	80.01	78.49
	200	100.01	98.49

PIN	01	03	05	07	09	11	13	15	17	19	21	23	25	27	29	31	33	35	37	39
PIN	02	04	06	08	10	12	14	16	18	20	22	24	26	28	30	32	34	36	38	40
	1	1	1	1	1	1	1	1	1	1	1	1	1	1	1	1	1	1	1	1
PIN	41	43	45	47	49	51	53	55	57	59	61	63	65	67	69	71	73	75	77	79
PIN	42	44	46	48	50	52	54	56	58	60	62	64	66	68	70	72	74	76	78	80
	1	1	1	1	1	1	1	1	1	1	1	1	1	1	1	1	1	1	1	1
PIN	81	83	85	87	89	91	93	95	97	99	101	103	105	107	109	111	113	115	117	119
PIN	82	84	86	88	90	92	94	96	98	100	102	104	106	108	110	112	114	116	118	120
	1	1	1	1	1	1	1	1	1	1	1	1	1	1	1	1	1	1	1	1

F

X10	12.11.2019
REV	DATE

Code: 1~10 (B)	1	2	3	4	5	6	7	8	9	10
Male	4.267	7.267	10.267	15.265	18.263	21.260	24.231	29.260	13.258	14.239
Code:1	1	1	1	1	1	1	1	1	1	1
Female	3.25	3.25	3.25	3.25	3.25	3.25	3.25	3.25	3.25	3.25
Mating Height(H)	5.00	8.00	11.00	16.00	19.00	22.00	25.00	30.00	14.00	15.00

**PROPRIETARY NOTE:**  
 This document contains confidential information and proprietary to Rego Electronics and shall not be reproduced or disclosed to other documents or used for any purpose other than that for which was obtained without the expressed written consent of Rego Electronics.

.X ± 0.30	APPROVED: Chris	 <a href="http://www.rego.com.tw">http://www.rego.com.tw</a>
.XX ± 0.20	CHECKED: Andy	
.XXX± 0.15	DRAWN: Vic	
X* ± 3'		
UNITS: mm	SCALE: NONE	TITLE: High Speed Board to Board Pitch 0.8mm Plug
		PART NO: 803HC84-xxMCxDP1NxxTS
		SHEET: 1 OF 7

1 2 3 4 5 6 7 8 9 10