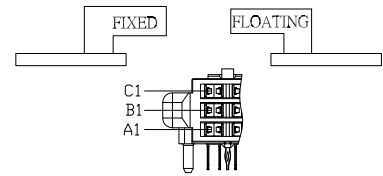
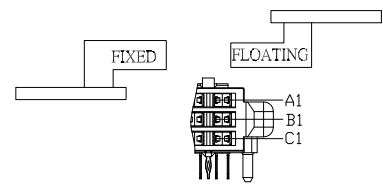


Standard application circuit designations



Inverted application circuit designations



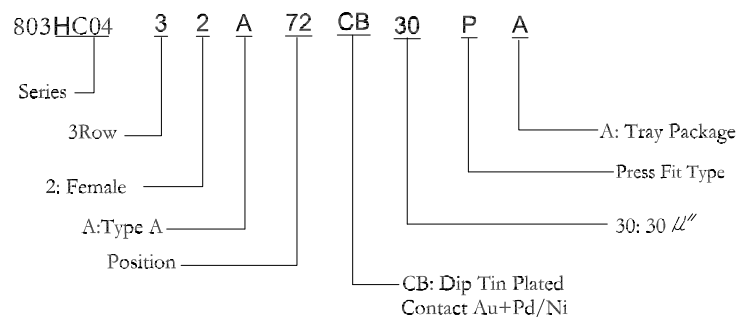
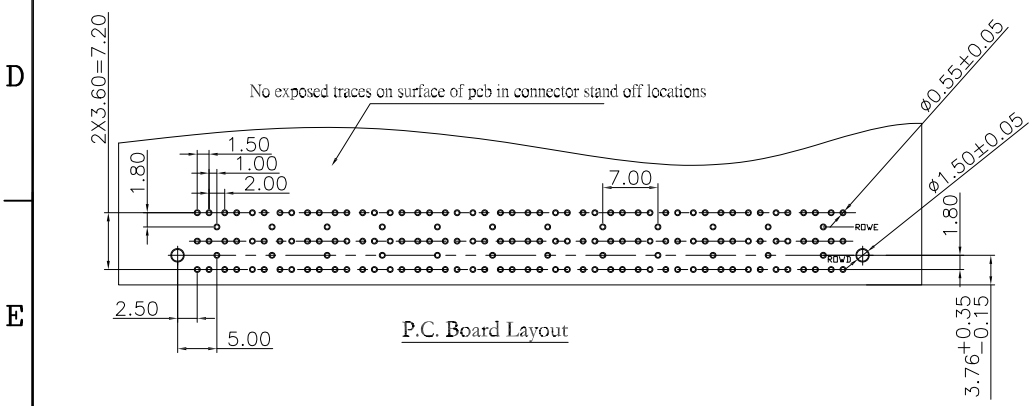
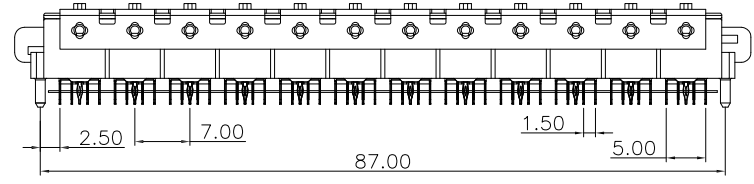
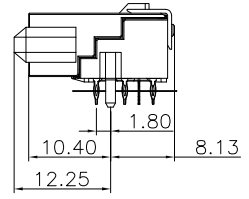
**Material:**

Housing: Alloy of Zinc.  
 Contacts: Copper Alloy.  
 Lock: Copper Alloy.


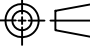
**Electrical Characteristics:**

Current Rating: Signal connector : 2.7Amps--one pair ; 2.4Amps--two adjacent pair ; 2.0Amps--three or more adjacent pair  
 Operating Temperature: -20°C~+85°C .  
 Dielectric Withstanding Voltage: AC 500V For 1 minute.  
 No breakdown; current leakage<5mA  
 Contact Resistance: 30mΩ max for Signal. at DC 100mA.

**\*RoHS Compliant**



PROPRIETARY NOTE:  
 This document contains confidential information and proprietary to Rego Electronics and shall not be reproduced or disclosed to other documents or used for any purpose other than that for which was obtained without the expressed written consent of Rego Electronics.

.X ± 0.30	APPROVED: Chris	 <a href="http://www.rego.com.tw">http://www.rego.com.tw</a>
.XX ± 0.20	CHECKED: Denny	
.XXX ± 0.15	DRAWN: Bryan	
X* ± 3'		
	UNITS: mm	SCALE: NONE
TITLE: HIGH SPEED METAL SHIELDED BOARD TO BOARD FEMALE CONNECTOR		PART NO: 803HC04-32A72CB30PA
SHEET: 1		OF 1

A	11.07.2016
REV	DATE