

Material and Plating:

Housing: LCP, UL94V-0, BLACK

Contact: Phosphor copper

Gold Plated on Contact Area and 80u" Min. Tin or Gold Flash Plated on solder tail over Nickel 50u" Min.

Electrical Characteristics:

Current Rating: 0.5 AMP.

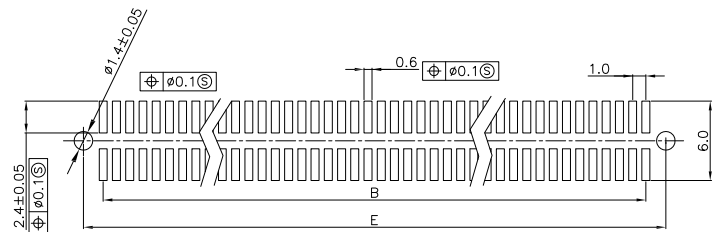
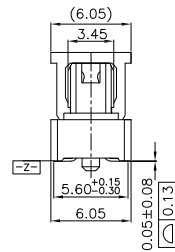
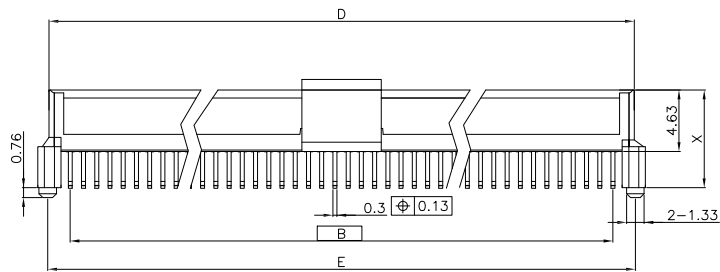
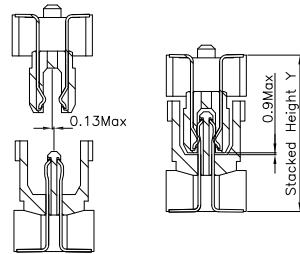
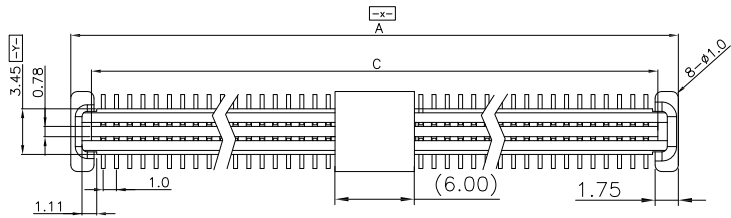
Dielectric Withstanding Voltage: AC 500V For 1 minute.

Insulator Resistance: 100MΩ min. at DC 100V.

Contact Resistance: 40mΩ max. at DC 1mA.

Operating Temperature: -40°C~+85°C .

***RoHS Compliant**



P.C. Board Layout


80348- xx G xx D x N x T - x
 Series Position G: Gold Plated C: Selective Gold Plated
 00: G/F
 10: 10μ"
 15: 15μ"
 30: 30μ"
 D: SMD Type
 P: With Post
 N: Without Post
 T: Tape & Reel Package
 P: Plastic Pad (Black)
 S: Mylar
 Code 1
 Code 2
 Code 3
 Code 4
 Blank: Black
 N: Beige

| **Available Position | | | | | | | | | |
|----------------------|----|----|----|------|-----------|-------|-------|-------|-------|
| Code | | | | Pos. | Dimension | | | | |
| H1 | H2 | H3 | H4 | | A | B | C | D | E |
| | | | | 14 | 10.90 | 6.00 | 7.80 | 9.22 | 9.40 |
| | | | | 18 | 12.90 | 8.00 | 9.80 | 11.22 | 11.40 |
| * | * | * | * | 20 | 13.90 | 9.00 | 10.80 | 12.22 | 12.40 |
| * | * | * | * | 30 | 18.90 | 14.00 | 15.80 | 17.22 | 17.40 |
| * | * | * | * | 34 | 20.90 | 16.00 | 17.80 | 19.22 | 19.40 |
| | | | | 36 | 21.90 | 17.00 | 18.80 | 20.22 | 20.40 |
| * | * | * | * | 40 | 23.90 | 19.00 | 20.80 | 22.22 | 22.40 |
| | | | | 50 | 28.90 | 24.00 | 25.80 | 27.22 | 27.40 |
| * | * | * | * | 64 | 35.90 | 31.00 | 32.80 | 34.22 | 34.40 |
| * | * | * | * | 80 | 43.90 | 39.00 | 40.80 | 42.22 | 42.40 |
| | | | | 84 | 45.90 | 41.00 | 42.80 | 44.22 | 44.40 |
| | | | | 100 | 53.90 | 49.00 | 50.80 | 52.22 | 52.40 |

| | | | | | | | | | | | | |
|------------------|------|------|------|------|------|------|------|------|------|-------|-------|-------|
| code:1~4 X | 1 | 1 | 1 | 2 | 2 | 2 | 3 | 3 | 3 | 4 | 4 | 4 |
| 80348 | 5.37 | 5.37 | 5.37 | 7.37 | 7.37 | 7.37 | 8.37 | 8.37 | 8.37 | 10.37 | 10.37 | 10.37 |
| code:1~3 X | 1 | 2 | 3 | 1 | 2 | 3 | 1 | 2 | 3 | 1 | 2 | 3 |
| 80349 | 6.35 | 7.35 | 8.35 | 6.35 | 7.35 | 8.35 | 6.35 | 7.35 | 8.35 | 6.35 | 7.35 | 8.35 |
| stacked height Y | 8.0 | 9.0 | 10.0 | 10.0 | 11.0 | 12.0 | 11.0 | 12.0 | 13.0 | 13.0 | 14.0 | 15.0 |

PROPRIETARY NOTE:

This document contains confidential information and proprietary to Rego Electronics and shall not be reproduced or disclosed to other documents or used for any purpose other than that for which was obtained without the expressed written consent of Rego Electronics.

| | | | |
|-------------|-----------|-------|--|
| .X ± 0.30 | APPROVED: | Chris |  http://www.rego.com.tw |
| .XX ± 0.20 | CHECKED: | Andy | |
| .XXX ± 0.15 | DRAWN: | Vic | TITLE: Board To Board Pitch : 1.00mm Female Type |
| X* ± 3' | UNITS: | mm | PART NO: 80348-xxGxxDxNxT-x |
| | SCALE: | NONE | SHEET: 1 OF 1 |

| | |
|-----|-----------|
| R3 | 21.1.2019 |
| REV | DATE |