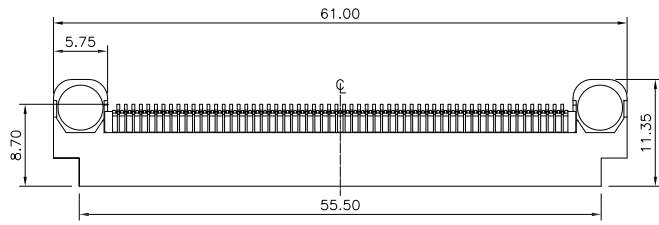
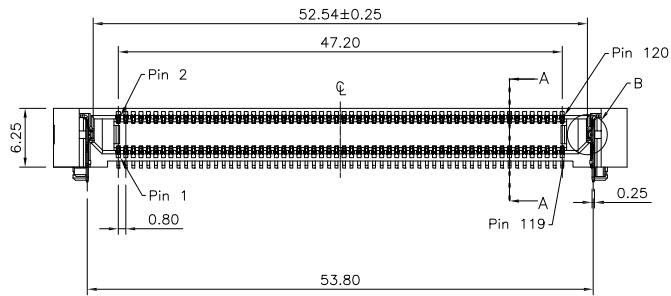


1 2 3 4 5 6 7 8 9 10

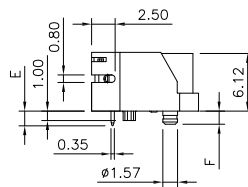
A



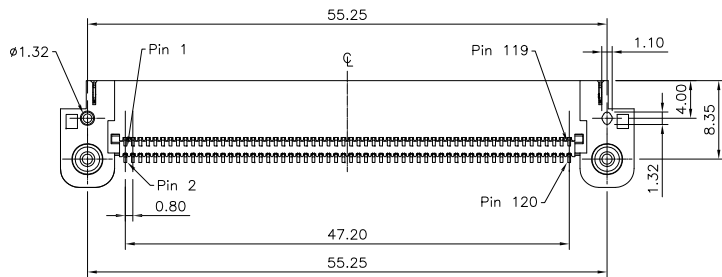
B



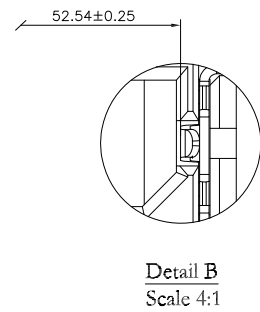
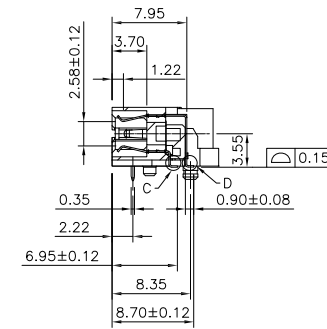
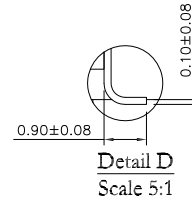
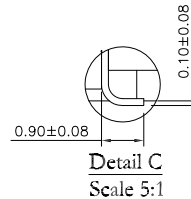
C



D



E



Material:

Housing: LCP, UL94V-0, Black.
 Contacts: Phosphor Bronze, Gold Plated on Contact Area and Matte Tin Plated on Solder Tail over Nickel 50 u" Min.

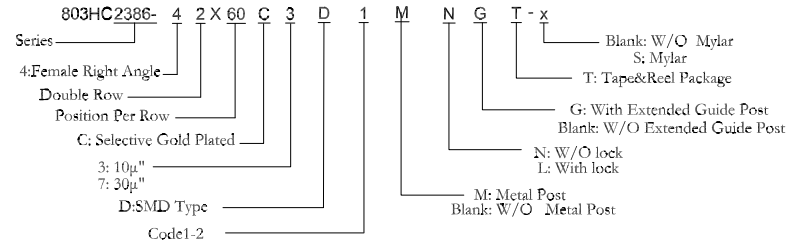
Counterweight: Brass

Latches: Phosphor Bronze

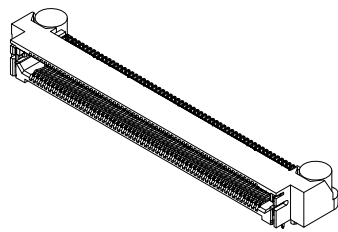
Electrical Characteristics:

Current Rating: 1.4 AMP.
 Dielectric Withstanding Voltage: AC 900V.
 Insulation Resistance: 50000MΩ min.
 Contact Resistance: Δ15mΩ max.
 Operating Temperature: -55°C~+125°C.

***RoHS Compliant**




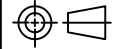
F



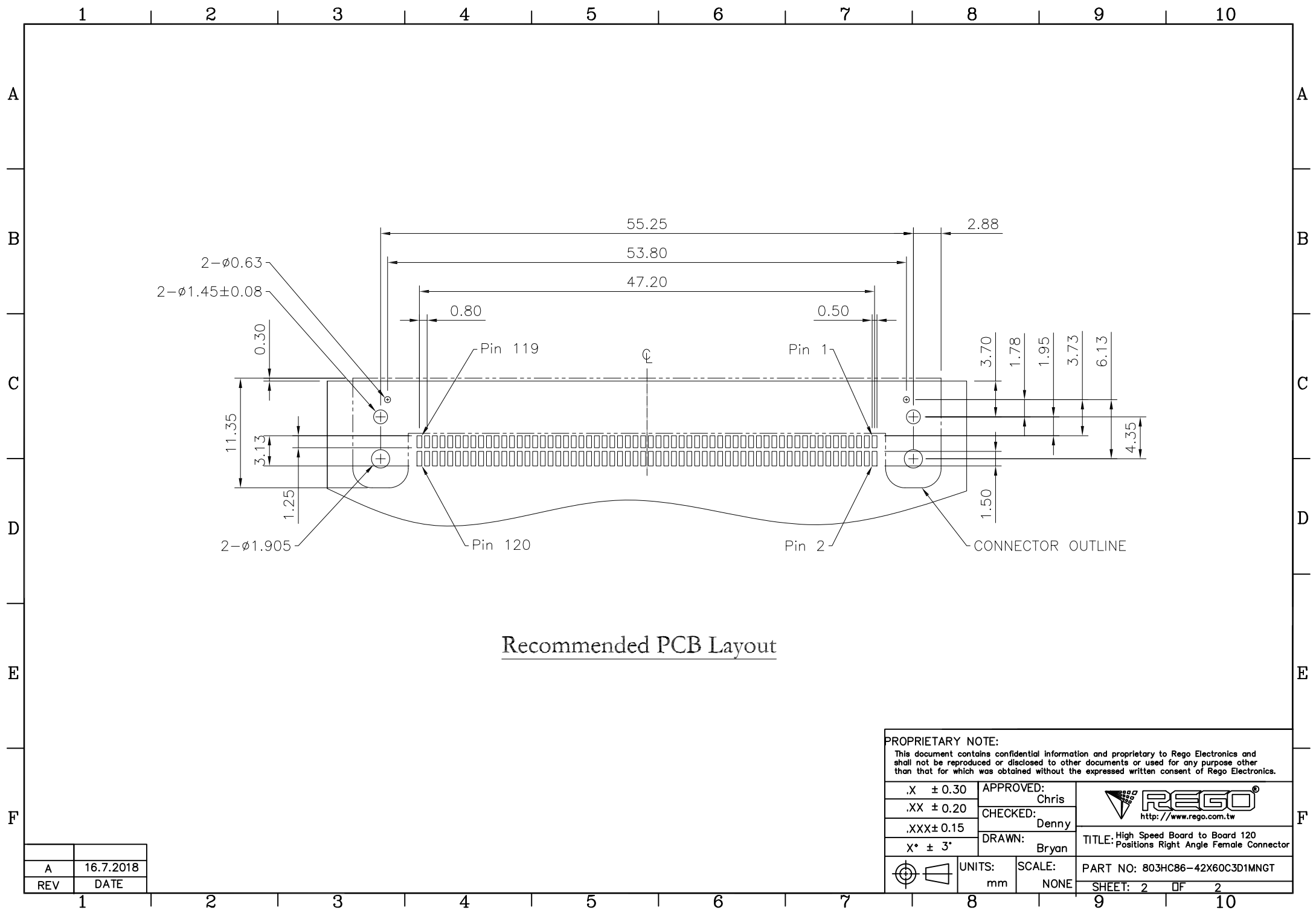
A	16.7.2018
REV	DATE

PCB Thickness	Code	Lock	Metal Post
Dimension		E	F
1.58	1	1.55	1.40
2.36	2	2.34	2.19


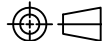
PROPRIETARY NOTE:
 This document contains confidential information and proprietary to Rego Electronics and shall not be reproduced or disclosed to other documents or used for any purpose other than that for which was obtained without the expressed written consent of Rego Electronics.

.X ± 0.30	APPROVED:	 http://www.rego.com.tw	
.XX ± 0.20	CHECKED:		
.XXX ± 0.15	DRAWN:		
X* ± 3'	Chris	Denny	
	Bryan		
	UNITS:	SCALE:	PART NO: 803HC86-42X60C3D1MNGT
	mm	NONE	SHEET: 1 OF 2

1 2 3 4 5 6 7 8 9 10



Recommended PCB Layout

PROPRIETARY NOTE: This document contains confidential information and proprietary to Rego Electronics and shall not be reproduced or disclosed to other documents or used for any purpose other than that for which was obtained without the expressed written consent of Rego Electronics.			
.X ± 0.30	APPROVED:	 http://www.rego.com.tw	TITLE: High Speed Board to Board 120 Positions Right Angle Female Connector
.XX ± 0.20	CHECKED:		
.XXX ± 0.15	DRAWN:		
X* ± 3'			
	UNITS:	SCALE:	PART NO: 803HC86-42X60C3D1MNGT
	mm	NONE	SHEET: 2 of 2

REV	DATE
A	16.7.2018