
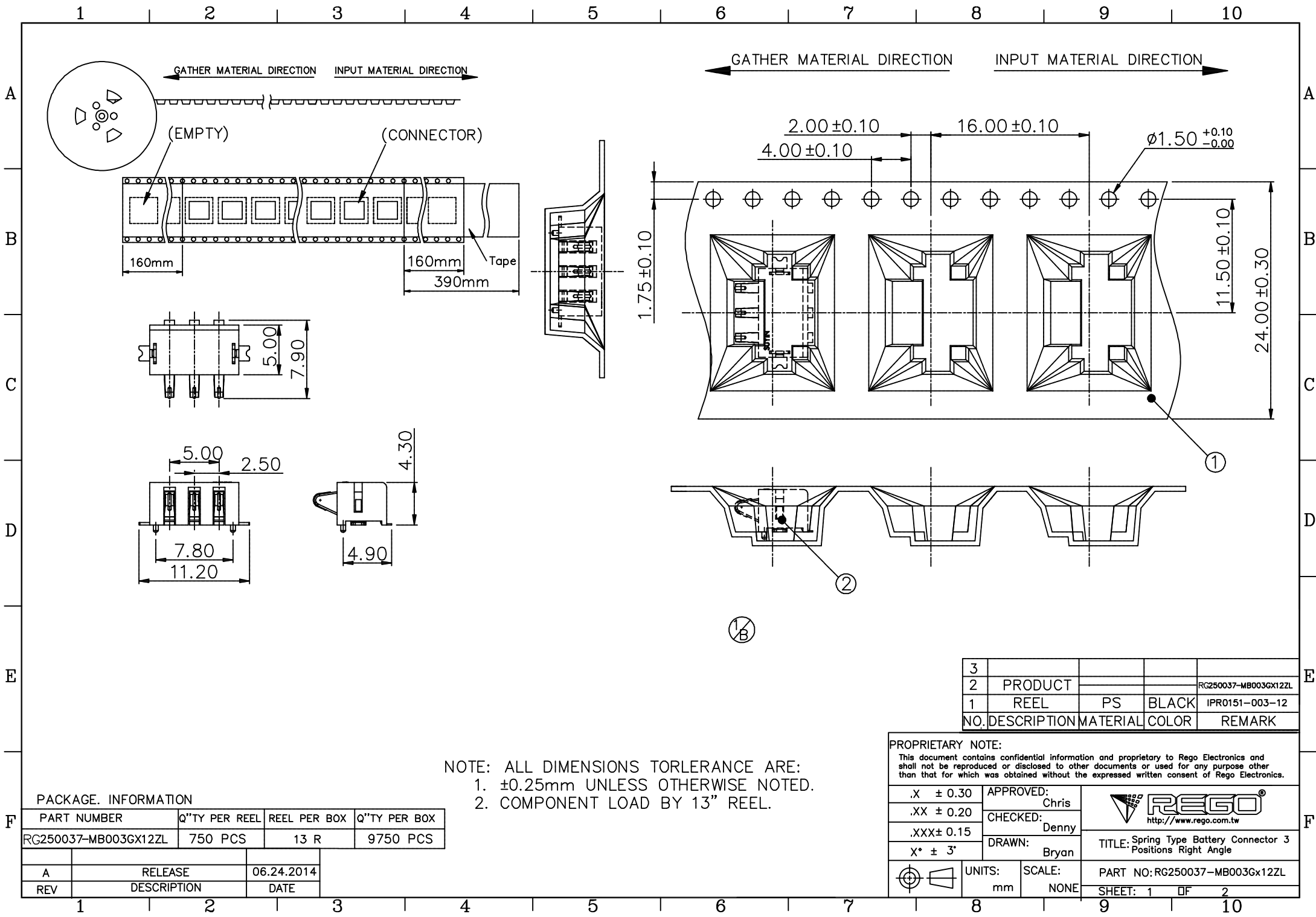


A	RELEASE	06.24.2014
REV	DESCRIPTION	DATE

3	FORK	METAL	—	TIN PLATED OVER NICKEL
2	TERMINAL	COPPER ALLOY	—	GOLD PLATED OVER NICKEL
1	HOUSING	HIGH TEMP PLASTIC	BLACK	UL94V-0
NO. DESCRIPTION		MATERIAL	COLOR	REMARK

PROPRIETARY NOTE: This document contains confidential information and proprietary to Rego Electronics and shall not be reproduced or disclosed to other documents or used for any purpose other than that for which was obtained without the expressed written consent of Rego Electronics.			
.X ± 0.30	APPROVED:	 http://www.rego.com.tw	TITLE: Spring Type Battery Connector 3 Positions Right Angle PART NO: RG250037-MB003Gx12ZL SHEET: 1 of 1
.XX ± 0.20	CHECKED:		
.XXX ± 0.15	DRAWN:		
X* ± 3*			
UNITS: mm	SCALE: NONE		



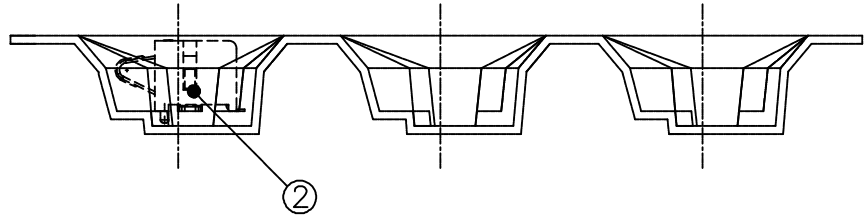
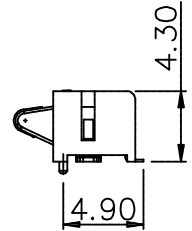
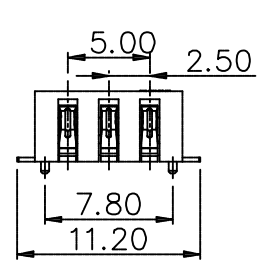
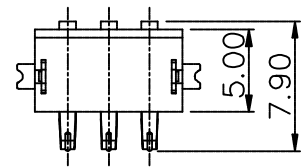
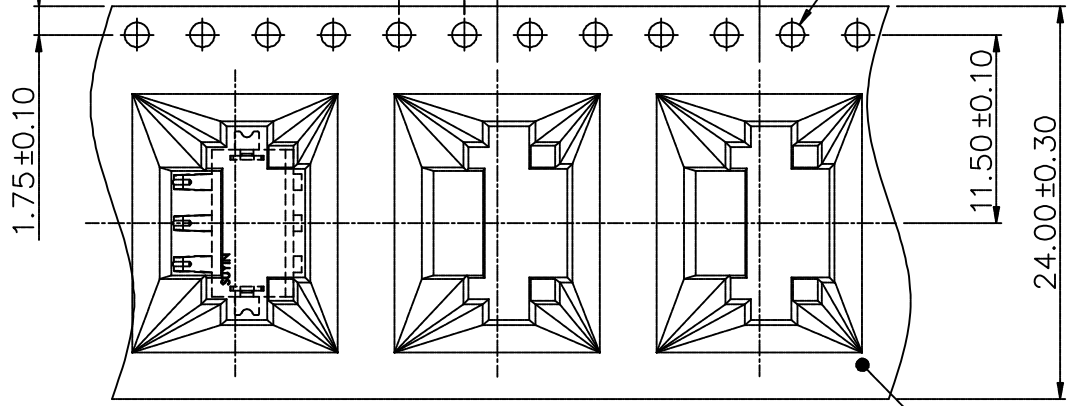
GATHER MATERIAL DIRECTION INPUT MATERIAL DIRECTION

GATHER MATERIAL DIRECTION INPUT MATERIAL DIRECTION

(EMPTY) (CONNECTOR)

160mm 160mm 390mm Tape

2.00 ± 0.10 16.00 ± 0.10 4.00 ± 0.10 $\phi 1.50^{+0.10}_{-0.00}$



1/8

3				
2	PRODUCT			RG250037-MB003GX12ZL
1	REEL	PS	BLACK	IPR0151-003-12
	NO. DESCRIPTION	MATERIAL	COLOR	REMARK

NOTE: ALL DIMENSIONS TOLERANCE ARE:
 1. $\pm 0.25\text{mm}$ UNLESS OTHERWISE NOTED.
 2. COMPONENT LOAD BY 13" REEL.


PACKAGE INFORMATION

PART NUMBER	Q'TY PER REEL	REEL PER BOX	Q'TY PER BOX
RG250037-MB003GX12ZL	750 PCS	13 R	9750 PCS

A	RELEASE	06.24.2014
REV	DESCRIPTION	DATE

PROPRIETARY NOTE:

This document contains confidential information and proprietary to Rego Electronics and shall not be reproduced or disclosed to other documents or used for any purpose other than that for which was obtained without the expressed written consent of Rego Electronics.

.X ± 0.30	APPROVED:	 http://www.rego.com.tw
.XX ± 0.20	Chris	
.XXX ± 0.15	Denny	
X° $\pm 3'$	Bryan	
UNITS:	SCALE:	TITLE: Spring Type Battery Connector 3 Positions Right Angle
mm	NONE	PART NO: RG250037-MB003GX12ZL
		SHEET: 1 OF 2