

**-Materials :**

.Insulator: Black plastics (265°C) UL94 V-0

.Plunger: Brass Au over Ni

.Barrel: Brass Au over Ni

.Spring: SUS surface treatment

**-Mechanical:**

.Spring force: 70g+/-20g at 1.0mm working stroke

.Full stroke: 1.40mm

.Life test: 100,000 cycles

**-Electrical:**

.Rated current & voltage: DC12V; 3A Max.

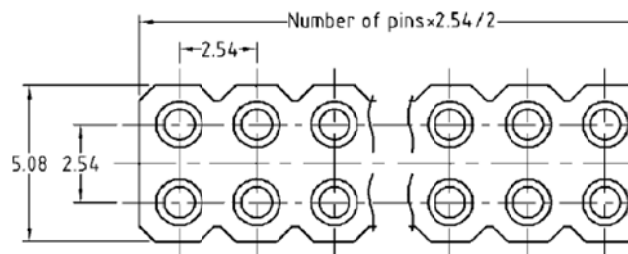
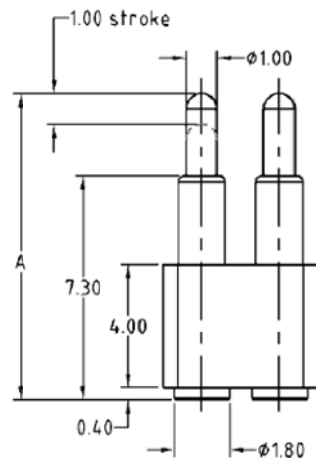
.Contact resistance: 50 milliohm Max.

Initial height-A	hh -code
9.0mm	11
10.0mm	21
11.0mm	31

p-Barrel	p-Plunger
1-0.125um	1-0.125um
2-0.25um	2-0.25um
3-0.375um	3-0.375um
4-0.5um	4-0.5um
5-0.75um	5-0.75um
...	...


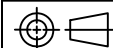
nn -Pins
01~64

**Double row series → 903hhpp-Fnn100AMF501**



**PROPRIETARY NOTE:**

This document contains confidential information and proprietary to Rego Electronics and shall not be reproduced or disclosed to other documents or used for any purpose other than that for which was obtained without the expressed written consent of Rego Electronics.

.X ± 0.30	APPROVED: Chris	 <a href="http://www.rego.com.tw">http://www.rego.com.tw</a>	
.XX ± 0.20	CHECKED: Andy		
.XXX ± 0.15	DRAWN: Vic		
X* ± 3'	UNITS: mm	SCALE: NONE	TITLE: 2.54mm pitch dual row H7.30mm spring loaded connector
		PART NO: 903hhpp-Fnn100AMF501	
		SHEET: 1 OF 1	

A	01.4.2019
REV	DATE