

Mating Angle Illustration
Scale 2:1

Material:

Housing: High Temperature Plastic UL94V-0, Black.

Contacts: Copper Alloy.

Solder Pad: Metal, Matte Tin Plated.

Electrical Characteristics:

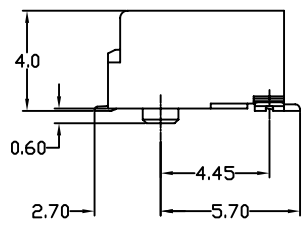
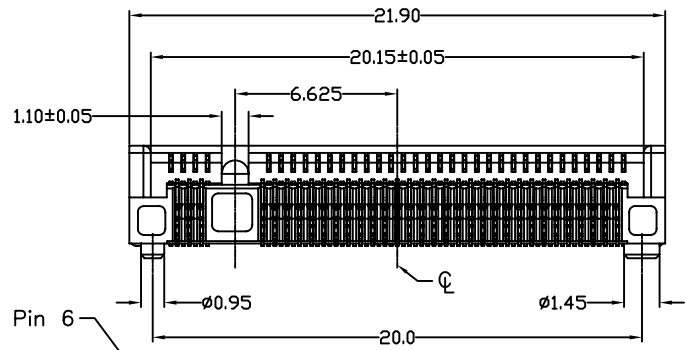
Current Rating: 0.5 AMP.

Insulator Resistance: 500MΩ min. at DC 500V.

Contact Resistance: 55mΩ max.

Operating Temperature: -40°C~+80°C.

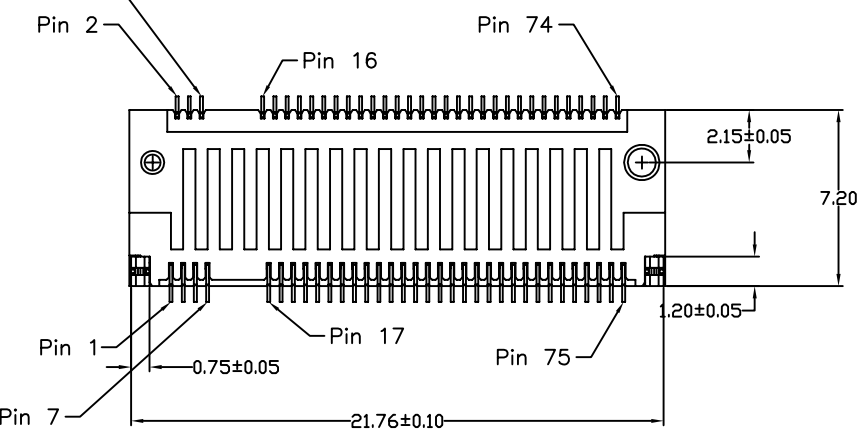
***RoHS Compliant**


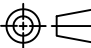


8038402- 67 G 00 A 5 T

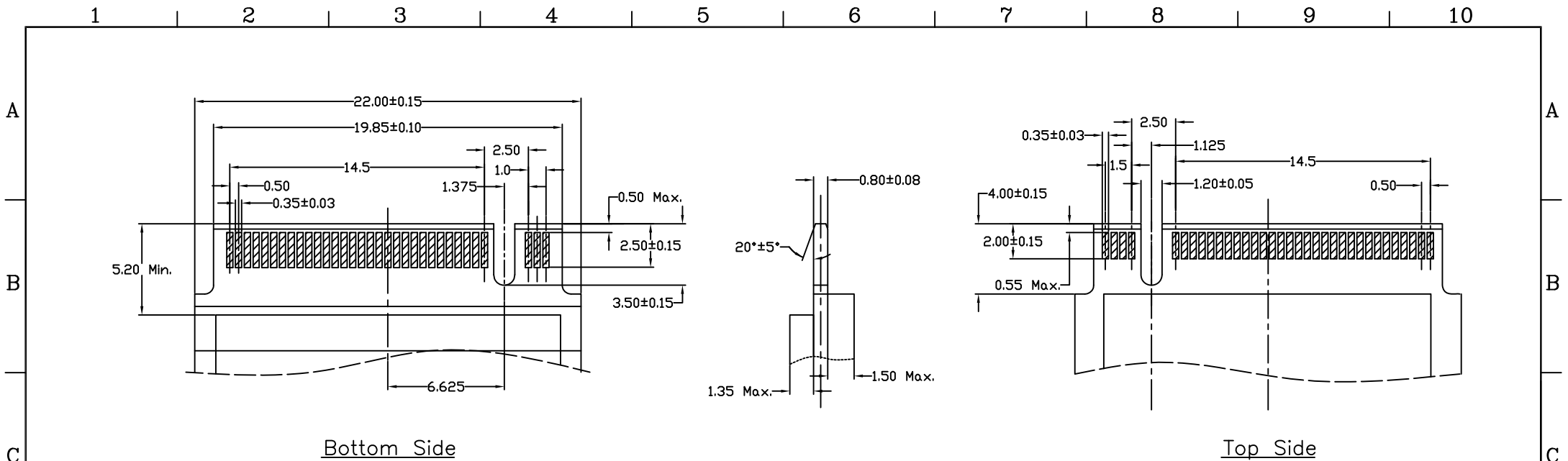
Series _____
 No. of Pin _____
 Count _____
 G: Gold Plated _____
 00: G/F _____

T: Tape & Reel
 Package
 5: 4.0mm Height
 A: Key A



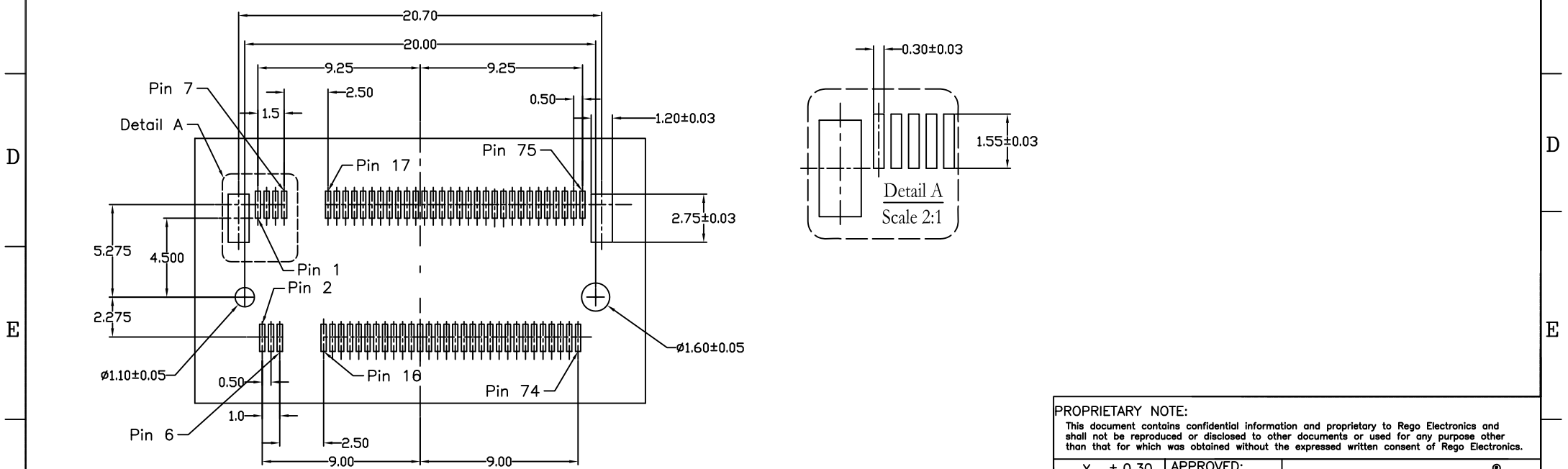
PROPRIETARY NOTE: This document contains confidential information and proprietary to Rego Electronics and shall not be reproduced or disclosed to other documents or used for any purpose other than that for which was obtained without the expressed written consent of Rego Electronics.			
.X ± 0.30	APPROVED: Chris	 http://www.rego.com.tw	TITLE: M.2 (NGFF) CONNECTOR 4.2H A KEY
.XX ± 0.20	CHECKED: Denny		
.XXX ± 0.15	DRAWN: Bryan		
X* ± 3*			
	UNITS: mm	SCALE: NONE	PART NO: 8038402-67G00A5T
			SHEET: 1 OF 2

A	08.31.2015
REV	DATE




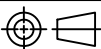
Bottom Side

Top Side



P.C. Board Layout

PROPRIETARY NOTE:
 This document contains confidential information and proprietary to Rego Electronics and shall not be reproduced or disclosed to other documents or used for any purpose other than that for which was obtained without the expressed written consent of Rego Electronics.

.X ± 0.30	APPROVED: Chris	 http://www.rego.com.tw
.XX ± 0.20	CHECKED: Denny	
.XXX ± 0.15	DRAWN: Bryan	
X* ± 3'		
	UNITS: mm	SCALE: NONE
		TITLE: M.2 (NGFF) CONNECTOR 4.2H A KEY
		PART NO: 8038402-67G00A5T
		SHEET: 2 OF 2

A	08.31.2015
REV	DATE