

A

B

C

D

E

F

A

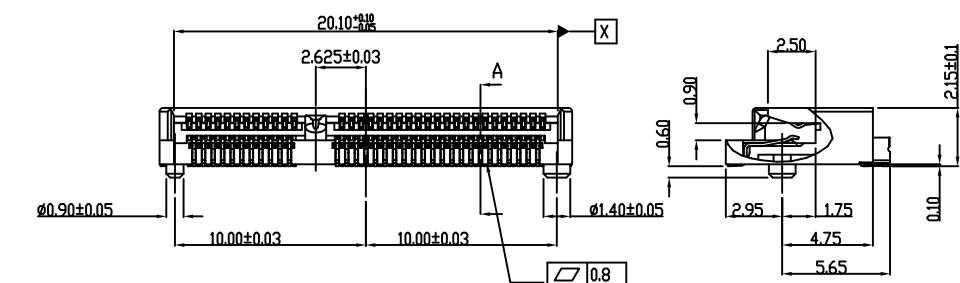
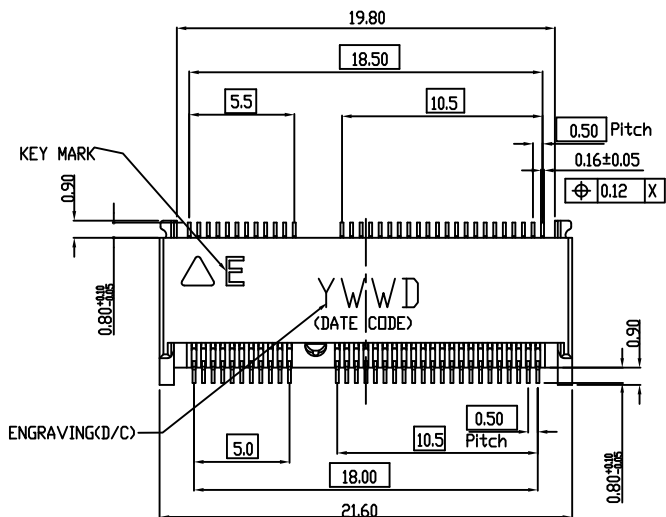
B

C

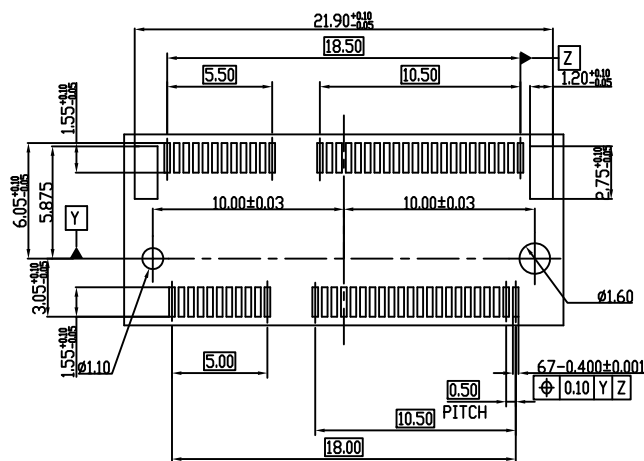
D

E

F



SECTION A-A



RECOMMEND NGFF MINI CARD MOUNTING TYPE_SMT_PCB OUTLIN
GENERAL TOLERANCE ±0.05mm

NOTES:

1.MATERIAL:

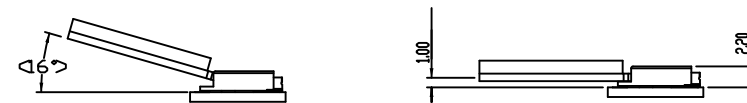
HOUSING: LCP, UL94V-0, Black
CONTACT: PHOSPHOR BRONZE(C5210R-EH)
HOLDDOWN: BRASS(C2680R-H)

2.FINISH:

CONTACT:
CONTACT AREA: G/F GOLD PLATED
SOLDER AREA: G/F GOLD PLATED
UNDER PLATING: NICKEL PLATED.
HOLDDOWN:
SOLDER AREA: 100u" TIN PLATED
UNDER PLATING: NICKEL PLATED.

3.SPECIFICATION:


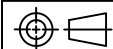
CURRENT RATING: 0.5A / (1PIN)
VOLTAGE RATING: 50V AC
DIELECTRIC WITHSTANDING: 300V AC FOR 1 MINUTE
CONTACT RESISTANCE: 55mΩ Max.
INSULATION RESISTANCE: 500MΩ Min
OPERATING TEMPERATURE: -40°C to +85°C
DURABILITY: 60 CYCLES MIN.
INSERTION FORCE: 20N MAX.
WITHDRAWAL FORCE: 25N



MATING CONDITION SCALE: 2:1

PROPRIETARY NOTE:

This document contains confidential information and proprietary to Rego Electronics and shall not be reproduced or disclosed to other documents or used for any purpose other than that for which was obtained without the expressed written consent of Rego Electronics.

.X ± 0.30	APPROVED: Chris	 http://www.rego.com.tw
.XX ± 0.20	CHECKED: Andy	
.XXX ± 0.15	DRAWN: Vic	TITLE: M.2 Connector 2.15H E Key Type
X* ± 3'		PART NO: 906M2-042E0
	UNITS: mm	SCALE: NONE
		SHEET: 1 OF 3

A	08.4.2017
REV	DATE

1 2 3 4 5 6 7 8 9 10

A

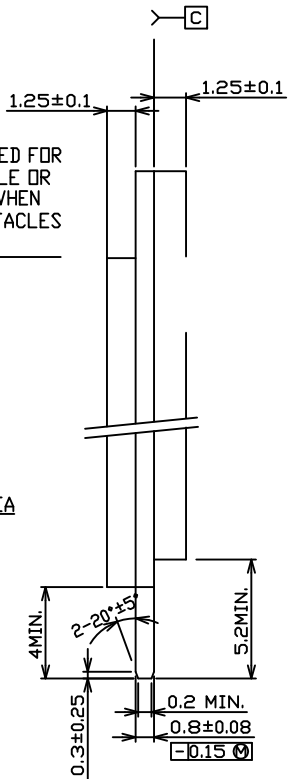
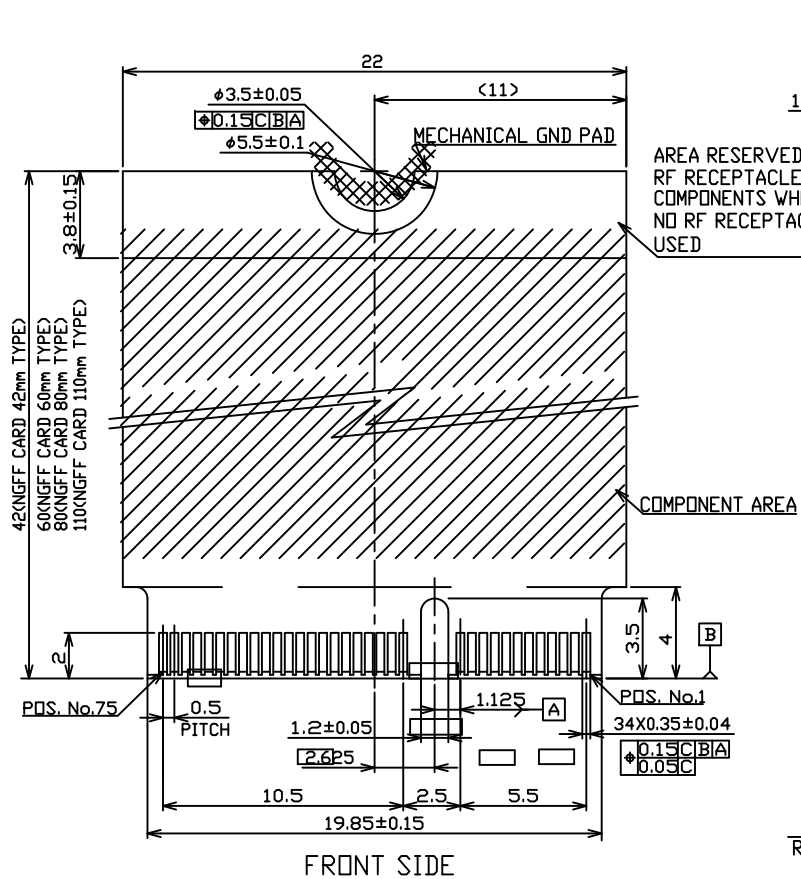
B

C

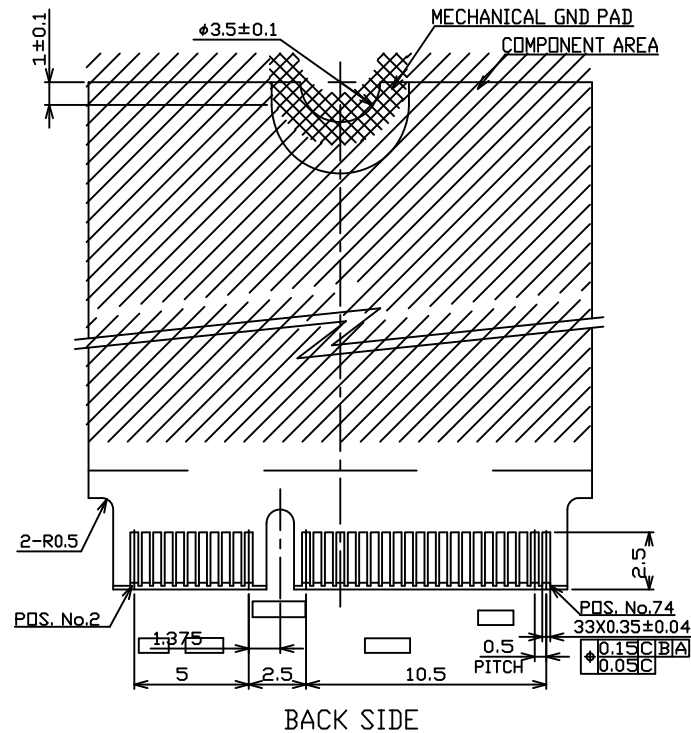
D

E

F




KEY ID "E"
RECOMMENDED MODULE LAYOUT
GENERAL TOLERANCE ±0.15



BACK SIDE

PROPRIETARY NOTE:

This document contains confidential information and proprietary to Rego Electronics and shall not be reproduced or disclosed to other documents or used for any purpose other than that for which was obtained without the expressed written consent of Rego Electronics.

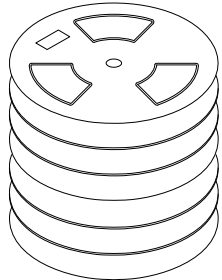
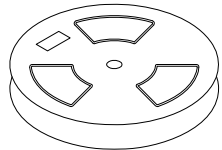
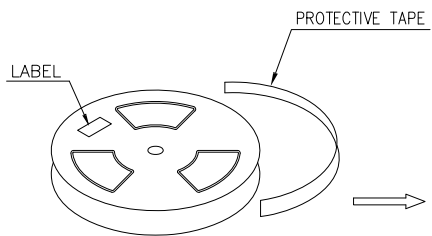
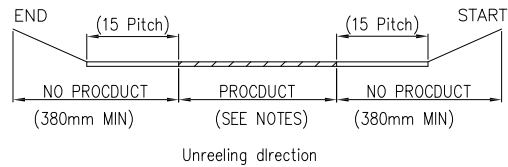
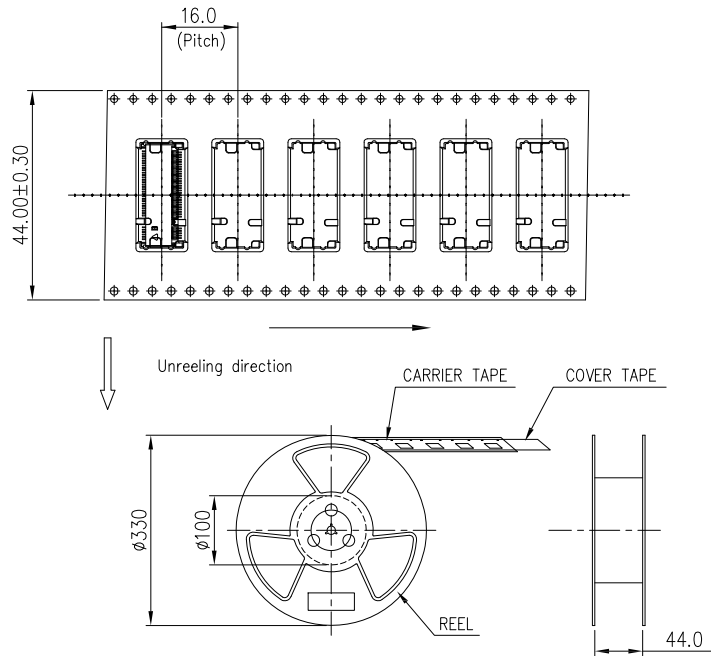
.X ± 0.30	APPROVED:	Chris	 http://www.rego.com.lw
.XX ± 0.20	CHECKED:	Andy	
.XXX ± 0.15	DRAWN:	Vic	
X* ± 3'	UNITS:	mm	TITLE: M.2 Connector 2.15H E Key Type
	SCALE:	NONE	PART NO: 906M2-042E0
			SHEET: 2 OF 3

A	08.4.2017
REV	DATE

1 2 3 4 5 6 7 8 9 10

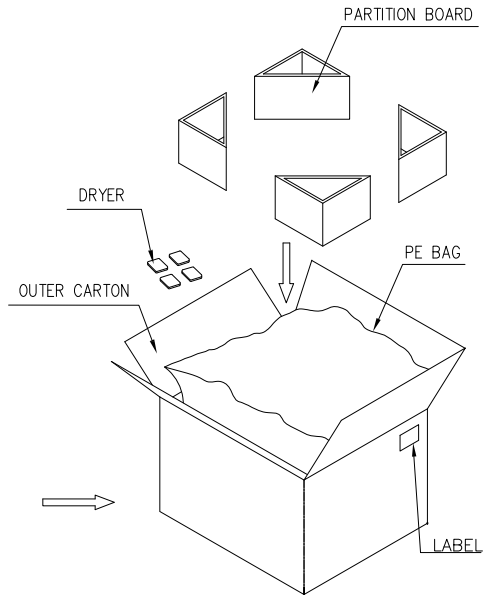
1 2 3 4 5 6 7 8 9 10

A
B
C
D
E
F


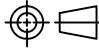


NOTES:

1. PACKING STYLE: 1,200 PCS/REEL
7,200 PCS/OUTER CARTON
2. MATERIAL: CARRIER TAPE: PS BLACK
COVER TAPE: PET FILM
REEL: PLASTIC
3. PEEL STRENGTH OF COVER TAPE: 20~80g
(PEEL SPEED 300mm/MINUTE)
4. CARTON SIZE: 350x350x320mm
5. G/W: Kg , N/W: Kg



PROPRIETARY NOTE:
This document contains confidential information and proprietary to Rego Electronics and shall not be reproduced or disclosed to other documents or used for any purpose other than that for which was obtained without the expressed written consent of Rego Electronics.

.X ± 0.30	APPROVED:	 http://www.rego.com.tw
.XX ± 0.20	CHECKED:	
.XXX ± 0.15	DRAWN:	
X° ± 3'		
	UNITS:	TITLE: M.2 Connector 2.15H E Key Type
	SCALE:	PART NO: 906M2-042E0
	mm	NONE
		SHEET: 3 OF 3

A	08.4.2017
REV	DATE

1 2 3 4 5 6 7 8 9 10