

ITEM	PART NAME	QTY	MATERIAL	FINISH
1	BODY	1	LCP	
2	UPPER CONTACT	34	PHOSPHOR BRONZE	GOLD PLATING
3	UPPER CONTACT	33	PHOSPHOR BRONZE	GOLD PLATING
4	HOLD DOWN	2	BRASS	TIN 100μ'


RECOMMEND NGFF MINI CARD MOUNTING TYPE_SMT_PCB OUTLIN :
GENERAL TOLERANCE ±0.05mm

TABLE 1:

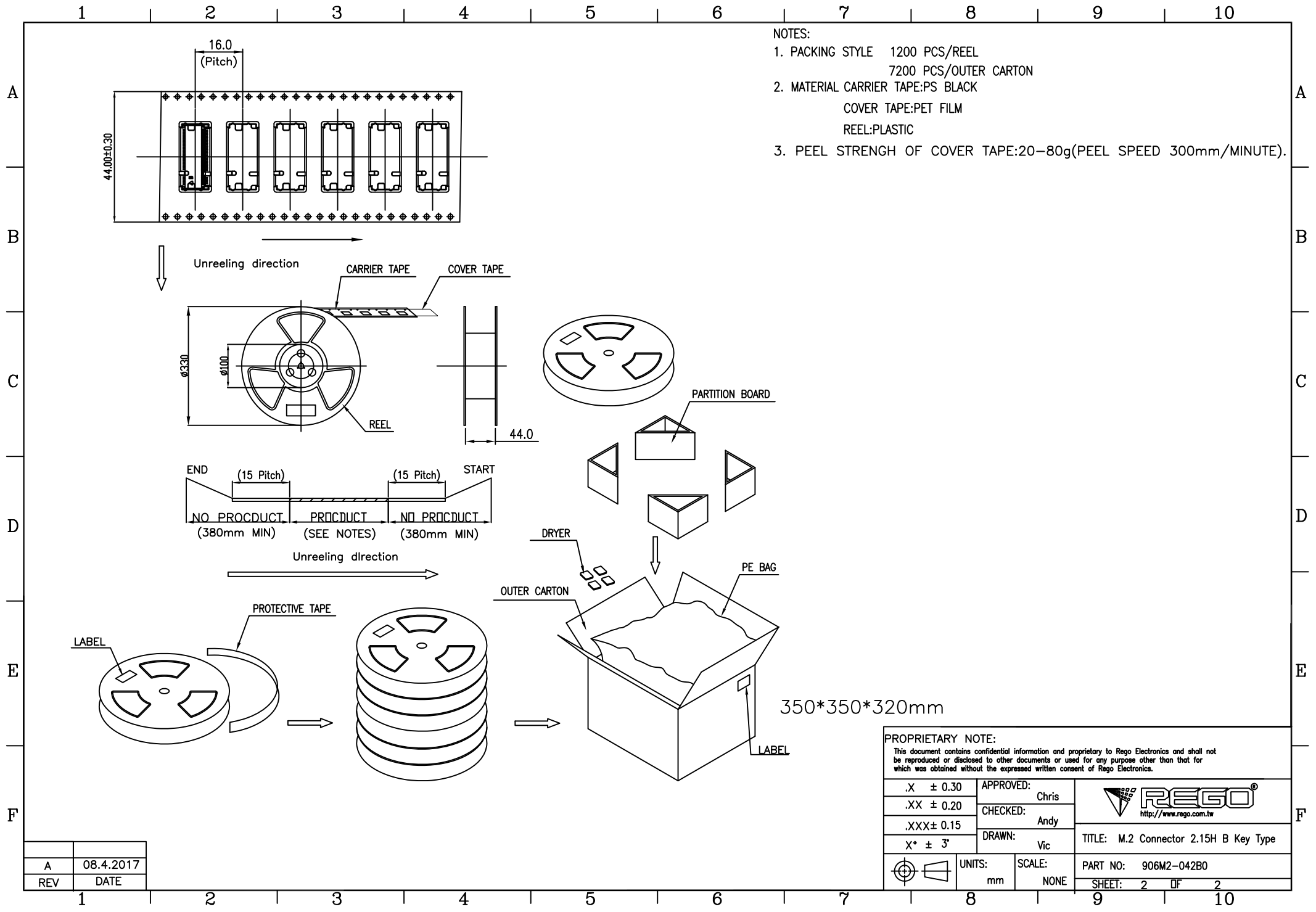
SERIES NUMBER	H1	H2
906M2-042B0(2.0H)	2.20	1.00

MATING CONDITION SCALE: 2:1


PROPRIETARY NOTE:
This document contains confidential information and proprietary to Rego Electronics and shall not be reproduced or disclosed to other documents or used for any purpose other than that for which was obtained without the expressed written consent of Rego Electronics.

.X ± 0.30	APPROVED:	Chris	 http://www.rego.com.tw
.XX ± 0.20	CHECKED:	Andy	
.XXX ± 0.15	DRAWN:	Vic	
X* ± 3'	UNITS:	mm	TITLE: M.2 Connector 2.15H B Key Type
	SCALE:	NONE	PART NO: 906M2-042B0
			SHEET: 1 OF 2

A	08.4.2017
REV	DATE



- NOTES:
1. PACKING STYLE 1200 PCS/REEL
7200 PCS/OUTER CARTON
 2. MATERIAL CARRIER TAPE:PS BLACK
COVER TAPE:PET FILM
REEL:PLASTIC
 3. PEEL STRENGTH OF COVER TAPE:20-80g(PEEL SPEED 300mm/MINUTE).

PROPRIETARY NOTE: This document contains confidential information and proprietary to Rego Electronics and shall not be reproduced or disclosed to other documents or used for any purpose other than that for which was obtained without the expressed written consent of Rego Electronics.		
.X ± 0.30	APPROVED: Chris	 http://www.rego.com.tw TITLE: M.2 Connector 2.15H B Key Type
.XX ± 0.20	CHECKED: Andy	
.XXX ± 0.15	DRAWN: Vic	
X* ± 3'		
UNITS: mm	SCALE: NONE	PART NO: 906M2-042B0
		SHEET: 2 OF 2

A	08.4.2017
REV	DATE