
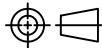
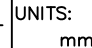


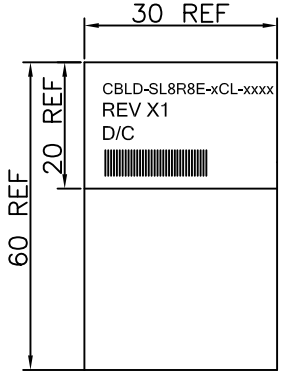
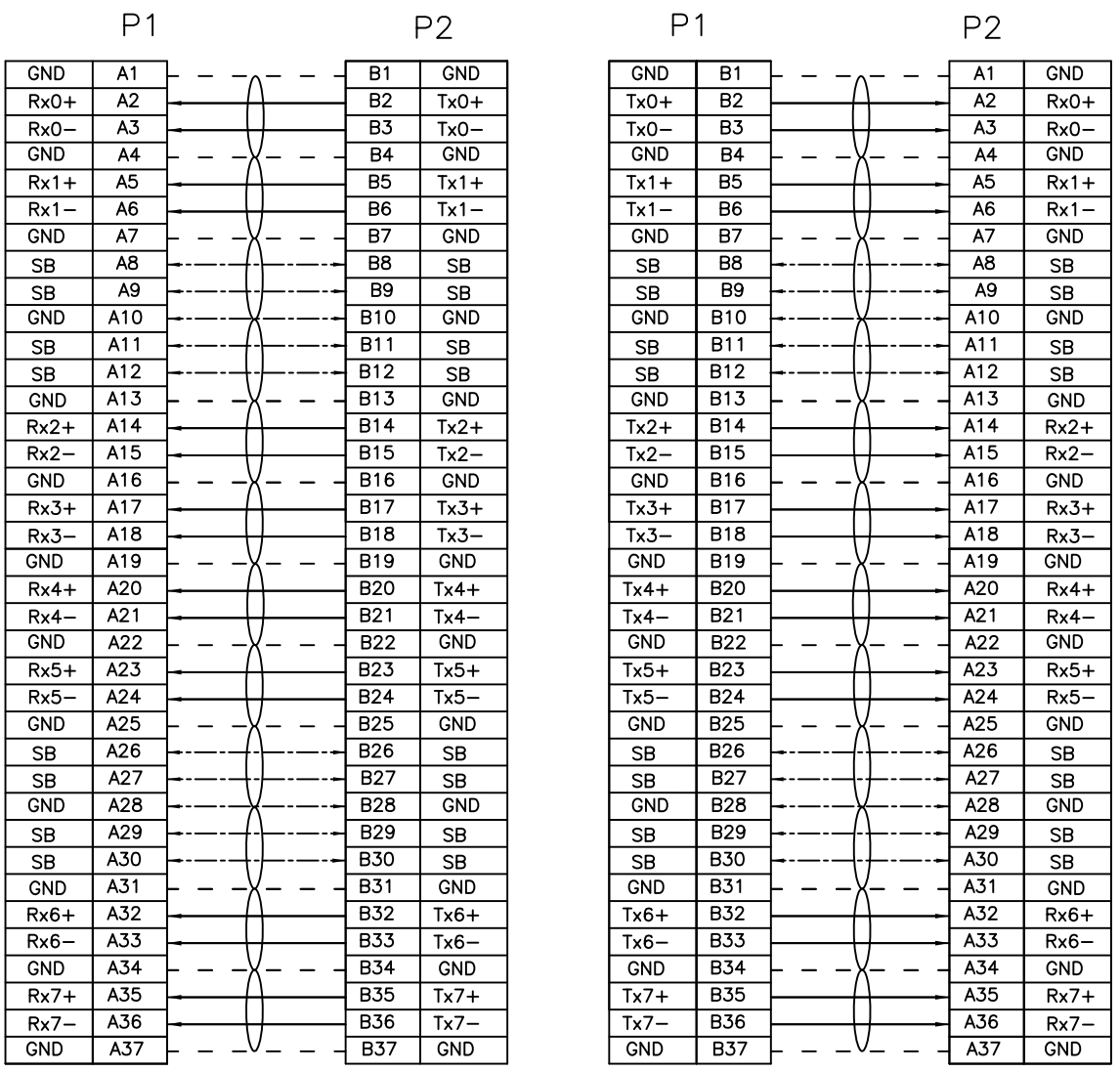
13	HOUSING FOR SFF-8654 8i S/E,PBT,BLACK	1
12	SR FOR SFF-8654 8i STR,PP+15%GF,BLACK	A/R
11	PCB FOR SLIMSAS 8i S/E,AU30u", SAS4.0 100 Ohm / PCIe 85 Ohm	1
10	EXPANDO,BLACK, OD 10MM,PET	A/R
9	WHITE LABEL, 60*30MM(REF)	1
8	ACETATE TAPE, W=25MM, BLACK	A/R
7	RIVET FOR SFF-8654	2
6	LATCH FOR SFF-8654	2
5	HOUSING FOR SFF-8654 8i RA,PC940,BLACK	1
4	INNER MOLDING FOR SFF-8654 8i STR, BLACK	1
3	PCB FOR SLIMSAS 8i RA,AU30u", SAS4.0 100 Ohm / PCIe 85 Ohm	1
2	DUST CAP FOR SFF-8654 8i, PE, NATURAL	2
1	TWINAX CABLE,30AWG~34AWG,BLUE, SAS4.0 100 Ohm / PCIe 85 Ohm	A/R
ITEM	DESCRIPTION	QTY

PROPRIETARY NOTE:
 This document contains confidential information and proprietary to Rego Electronics and shall not be reproduced or disclosed to other documents or used for any purpose other than that for which was obtained without the expressed written consent of Rego Electronics.

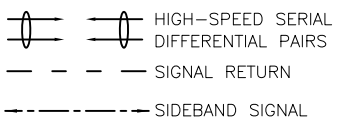
.X ± 0.30	APPROVED: Chris	 http://www.rego.com.tw
.XX ± 0.20	CHECKED: Andy	
.XXX ± 0.15	DRAWN: Vic	
X° ± 3°		TITLE: SlimSAS 8i Right Angle To SlimSAS 8i Side Exit Cable Assembly
 UNITS: mm  SCALE: NONE	PART NO: CBLD-SL8R8E-xCL-xxxx	
SHEET: 1 OF 2		

WIRING TABLE

LABEL INFORMATION



FONT: ARIAL
HEIGHT: 2.0mm Min



TEST CONDITIONS:

- 100% OPEN & SHORT & MISS-WIRING & INTERMITTENCE TEST.
- CONDUCTIVE RESISTANCE: 3Ω MAX.
- INSULATION RESISTANCE: 10 MΩ
- HI-POT TEST: 300VDC FOR 10ms.
- THIS PRODUCT MEETS SAS4.0 / PCIe4.0 & 100% SI TEST

PROPRIETARY NOTE:

This document contains confidential information and proprietary to Rego Electronics and shall not be reproduced or disclosed to other documents or used for any purpose other than that for which was obtained without the expressed written consent of Rego Electronics.

.X ± 0.30	APPROVED: Chris	 http://www.rego.com.tw
.XX ± 0.20	CHECKED: Andy	
.XXX ± 0.15	DRAWN: Vic	
X° ± 3'	UNITS: mm	SCALE: NONE
TITLE: SlimSAS 8i Right Angle To SlimSAS 8i Side Exit Cable Assembly		PART NO: CBLD-SL8R8E-xCL-xxxx
SHEET: 2		OF 2

A	05.11.2020
REV	DATE