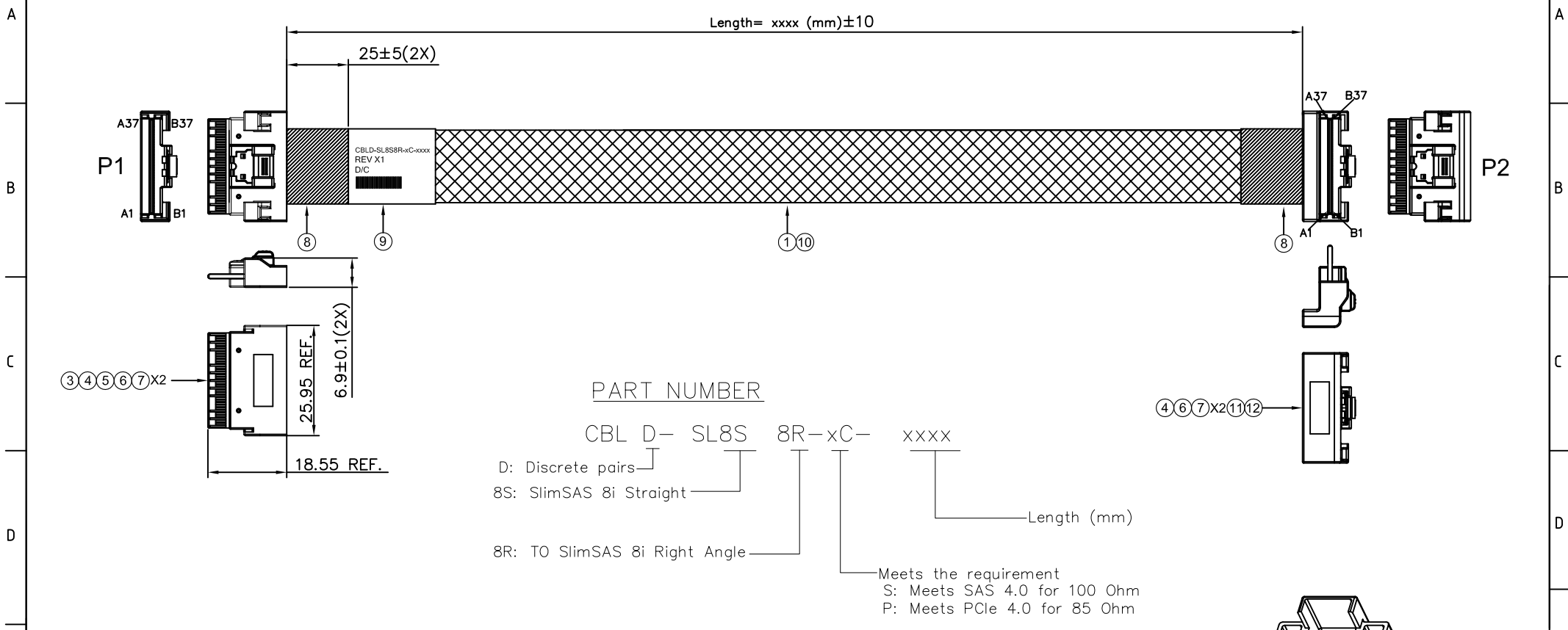


1	2	3	4	5	6	7	8	9	10
A	05.11.2020								
REV	DATE								




PART NUMBER

CBL D- SL8S 8R-xC- xxxx

- D: Discrete pairs
- 8S: SlimSAS 8i Straight
- 8R: TO SlimSAS 8i Right Angle
- xxxx: Meets the requirement
S: Meets SAS 4.0 for 100 Ohm
P: Meets PCIe 4.0 for 85 Ohm
- Length (mm)

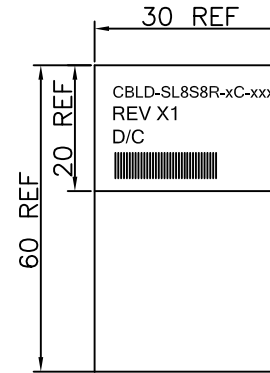
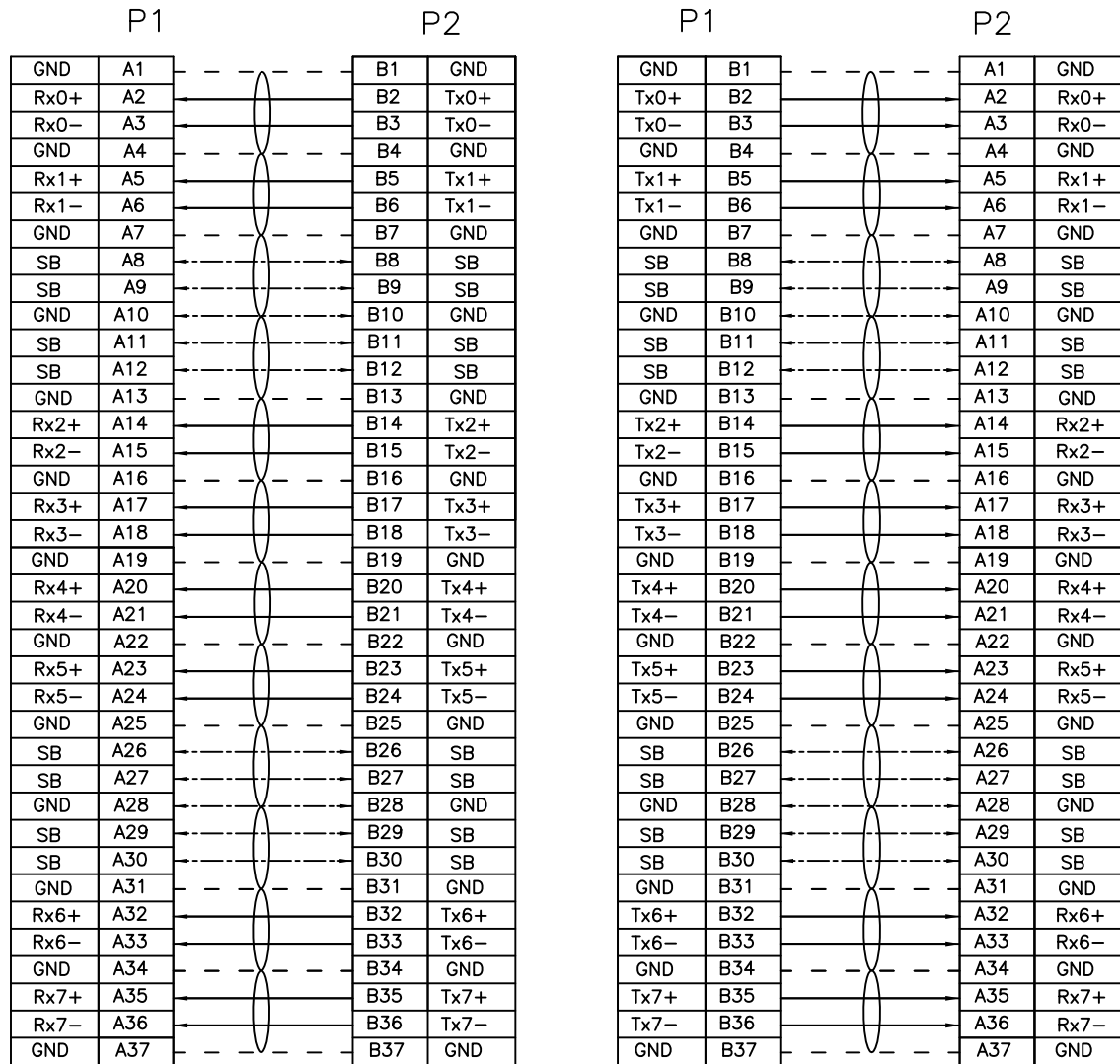
12	HOUSING FOR SFF-8654 8i RA,PC940,BLACK	1
11	PCB FOR SLIMSAS 8i RA,AU30u", SAS4.0 100 Ohm / PCIe 85 Ohm	1
10	EXPANDO,BLACK, OD 10MM,PET	A/R
9	WHITE LABEL, 60*30MM(REF)	1
8	ACETATE TAPE, W=25MM, BLACK	A/R
7	RIVET FOR SFF-8654	4
6	LATCH FOR SFF-8654	2
5	HOUSING FOR SFF-8654 8i STR, BLACK	1
4	INNER MOLDING FOR SFF-8654 8i STR, BLACK	2
3	PCB FOR SLIMLINE SAS 8i STR,AU30u", SAS4.0 100 Ohm / PCIe 85 Ohm	1
2	DUST CAP FOR SFF-8654 8i, PE, NATURAL	2
1	TWINAX CABLE,30AWG~34AWG,BLUE, SAS4.0 100 Ohm / PCIe 85 Ohm	A/R
ITEM	DESCRIPTION	Q'TY

PROPRIETARY NOTE:
This document contains confidential information and proprietary to Rego Electronics and shall not be reproduced or disclosed to other documents or used for any purpose other than that for which was obtained without the expressed written consent of Rego Electronics.

.X ± 0.30	APPROVED: Chris	 http://www.rego.com.tw
.XX ± 0.20	CHECKED: Andy	
.XXX ± 0.15	DRAWN: Vic	
X° ± 3°		
UNITS: mm	SCALE: NONE	TITLE: SlimSAS 8i STR To SlimSAS 8i Right Angle Cable Assembly
PART NO: CBLD-SL8S8R-xC-xxxx		SHEET: 1 OF 2

WIRING TABLE

LABEL INFORMATION




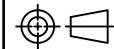
FONT: ARIAL
HEIGHT: 2.0mm Min

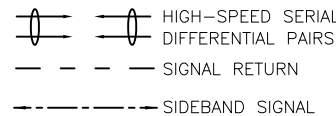
TEST CONDITIONS:

- 100% OPEN & SHORT & MISS-WIRING & INTERMITTENCE TEST.
- CONDUCTIVE RESISTANCE: 3Ω MAX.
- INSULATION RESISTANCE: 10 MΩ
- HI-POT TEST: 300VDC FOR 10ms.
- THIS PRODUCT MEETS SAS4.0 / PCIe4.0 & 100% SI TEST

PROPRIETARY NOTE:

This document contains confidential information and proprietary to Rego Electronics and shall not be reproduced or disclosed to other documents or used for any purpose other than that for which was obtained without the expressed written consent of Rego Electronics.

.X ± 0.30	APPROVED: Chris	
.XX ± 0.20	CHECKED: Andy	
.XXX ± 0.15	DRAWN: Vic	TITLE: SlimSAS 8i STR To SlimSAS 8i Right Angle Cable Assembly
X* ± 3'		PART NO: CBLD-SL8S8R-xC-xxxx
	UNITS: mm	SCALE: NONE
		SHEET: 2 OF 2



A	05.11.2020
REV	DATE