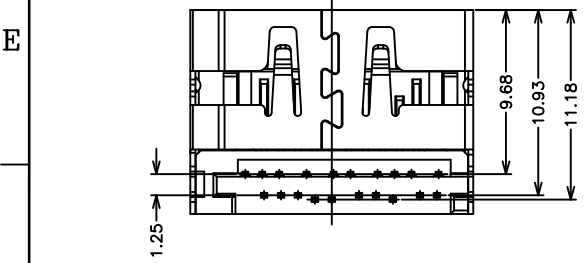
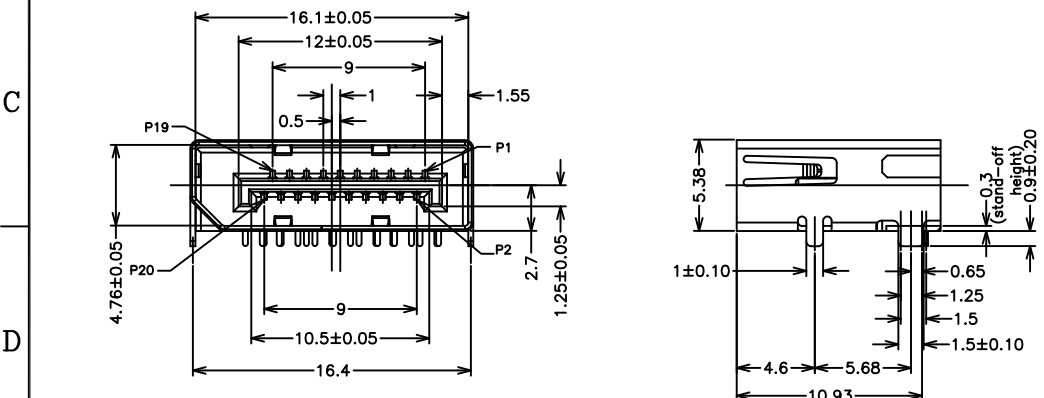
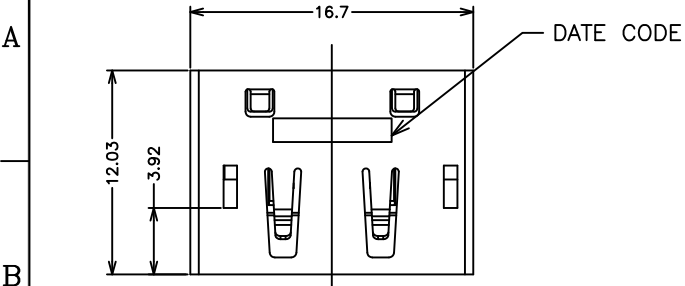


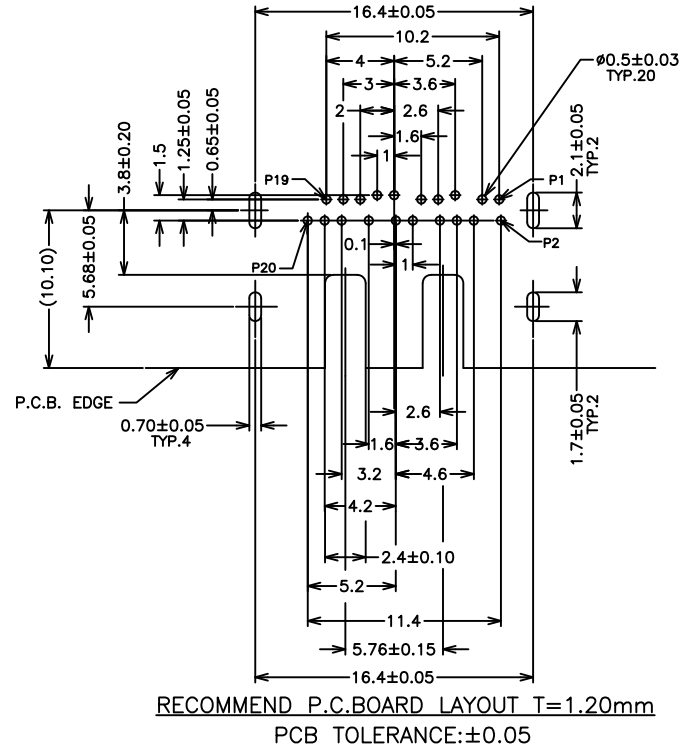
NOTES:  
 1.MATERIAL:  
 HOUSING:THERMOPLASTIC, HIGH TEMP, 30% G/F UL94 V-0  
 COLOR:BLACK  
 SHELL:STAINLESS STEEL  
 CONTACT:COPPER ALLOY  
 2.FINISH:  
 CONTACT:GOLD PLATING ON CONTACT AREA  
 100u" MIN. MATTE TIN PLATING ON SOLDERTAILS  
 50u" MIN. NICKEL UNDERPLATING OVER ALL  
 SHELL: 50u" MIN.NICKEL UNDERPLATING OVERALL




30μ"	845-004-206CRLND
PLATING	PART NUMBER

PIN DEFINITION

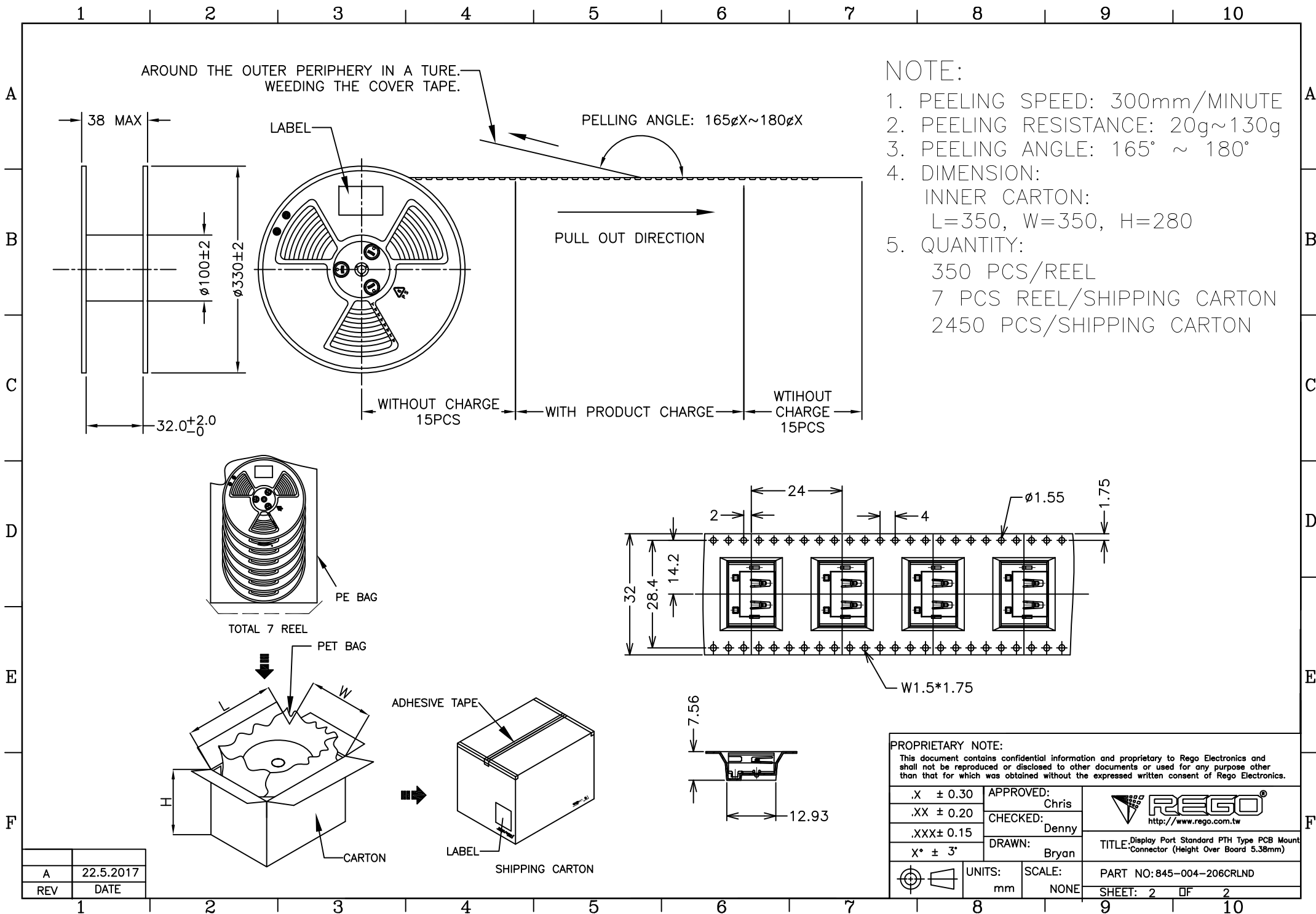
PIN	SIGNAL NAME
1	ML_LANE 0(p)
2	GND
3	ML_LANE 0(n)
4	ML_LANE 1(p)
5	GND
6	ML_LANE 1(n)
7	ML_LANE 2(p)
8	GND
9	ML_LANE 2(n)
10	ML_LANE 3(p)
11	GND
12	ML_LANE 3(n)
13	GND
14	GND
15	AUX CH (p)
16	GND
17	AUX CH (n)
18	Hot Plug Detect
19	Return
20	DP_PWR



PROPRIETARY NOTE:  
 This document contains confidential information and proprietary to Rego Electronics and shall not be reproduced or disclosed to other documents or used for any purpose other than that for which was obtained without the expressed written consent of Rego Electronics.

.X ± 0.30	APPROVED: Chris	 <a href="http://www.rego.com.tw">http://www.rego.com.tw</a>
.XX ± 0.20	CHECKED: Denny	
.XXX ± 0.15	DRAWN: Bryan	
X° ± 3°		
UNITS: mm	SCALE: NONE	TITLE: Display Port Standard PTH Type PCB Mount Connector (Height Over Board 5.38mm)
		PART NO: 845-004-206CRLND
		SHEET: 1 OF 2

A	22.5.2017
REV	DATE



A	22.5.2017
REV	DATE