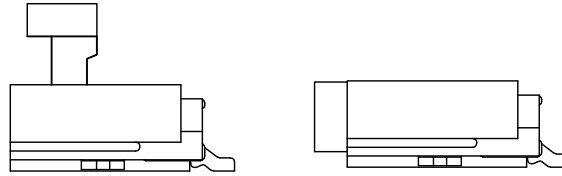
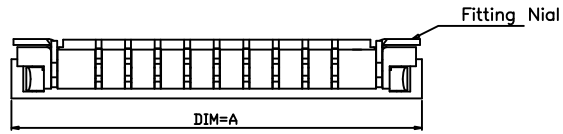


1 2 3 4 5 6 7 8 9 10

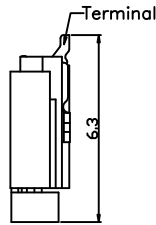
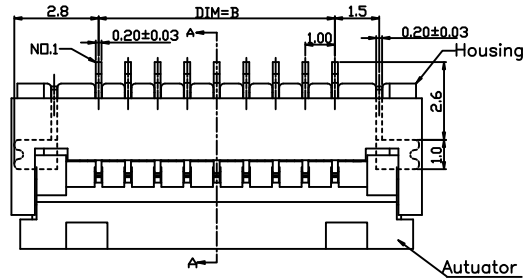
A
B
C
D
E
F

A
B
C
D
E
F



NOTE:
 Electrical Characteristics:
 Current rating:0.4A AC/DC
 Voltage rating:50V AC/DC
 Temperature range:-25°C~+85°C
 Withstand Voltage:200V AC/Minute
 Contact Resistance:≤20mΩ
 Insulation Resistance:500mΩ
 Relative Humidity:93%+40°C

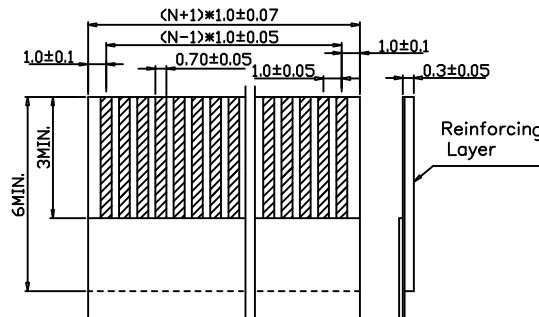
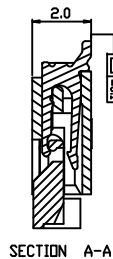
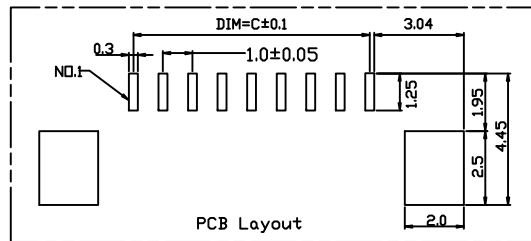
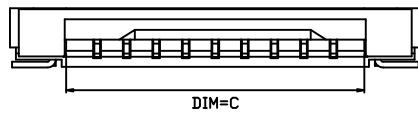
Material Description:
 Contact:Phosphor Bronze Tin-plated
 Solder Tab:Phosphor Bronze Tin-plated
 Housing:Thermoplastic (UL94V-0)
 Slider:Thermoplastic (UL94V-0)



■ **PART NO.**
 697-FPC10PSN-H20-xx x L
 Series ————
 No. Of Contacts : ———— T: Tube R: Reel
 04~ 30 pin



★ Available Number of Contacts

pin	DIMA	DIMB	DIMC	pin	DIMA	DIMB	DIMC
* 04	8.9	3.0	5.1	* 18	22.9	17.0	19.1
* 05	9.9	4.0	6.1	* 19	23.9	18.0	20.1
* 06	10.9	5.0	7.1	* 20	24.9	19.0	21.1
* 07	11.9	6.0	8.1	* 21	25.9	20.0	22.1
* 08	12.9	7.0	9.1	* 22	26.9	21.0	23.1
* 09	13.9	8.0	10.1	* 23	27.9	22.0	24.1
* 10	14.9	9.0	11.1	* 24	28.9	23.0	25.1
* 11	15.9	10.0	12.1	* 25	29.9	24.0	26.1
* 12	16.9	11.0	13.1	* 26	30.9	25.0	27.1
* 13	17.9	12.0	14.1	* 27	31.9	26.0	28.1
* 14	18.9	13.0	15.1	* 28	32.9	27.0	29.1
* 15	19.9	14.0	16.1	* 29	33.9	28.0	30.1
* 16	20.9	15.0	17.1	* 30	34.9	29.0	31.1
* 17	21.9	16.0	18.1				



RECOMMENDED FFC/FPC DIM.

PROPRIETARY NOTE:
 This document contains confidential information and proprietary to Rego Electronics and shall not be reproduced or disclosed to other documents or used for any purpose other than that for which was obtained without the expressed written consent of Rego Electronics.

.X ± 0.30	APPROVED: Chris	 http://www.rego.com.tw TITLE:1.0mm FPC-FFC Front lock cover Lower contact 2.0h Connector
.XX ± 0.20	CHECKED: Denny	
.XXX ± 0.15	DRAWN: Bryan	
X° ± 3°		
 UNITS: mm SCALE: NONE	PART NO:697-FPC10PSN-H20-xxxL SHEET: 1 OF 1	

A	22.5.2017
REV	DATE

1 2 3 4 5 6 7 8 9 10