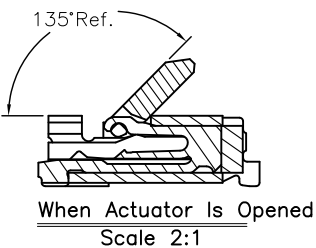
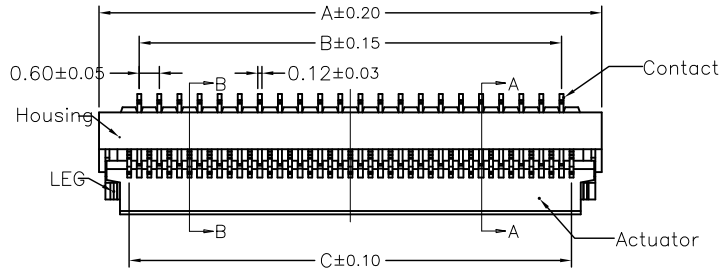


A
B
C
D
E
F

A
B
C
D
E
F

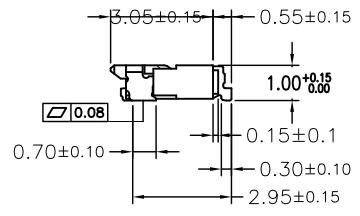
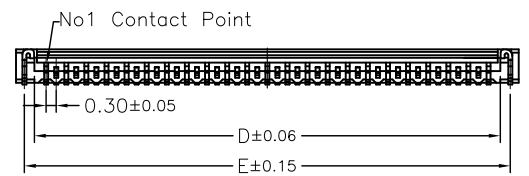


Note:

- 1. Material
 - 1.1: Housing: LCP UL94-V0 Color:Black.
 - 1.2: Actuator: LCP UL94-V0 Color:Black.
 - 1.3: Contact: C5210-SH T= 0.12 ± 0.005 .
 - 1.4: LEG: C5210-SH T= 0.12 ± 0.005 .
- 2. Plating
 - 2.1: Contact: Gold Flash over Ni
 - 2.2: LEG: Tin Over Ni
- 3. Rating:
 - 3.1: Operating Voltage: 30V AC/DC.
 - 3.2: Current Rating: 0.2A AC/DC.
 - 3.3: Operating Temperature: $-55^{\circ}\text{C} \sim +85^{\circ}\text{C}$.
- 4. Part Number:

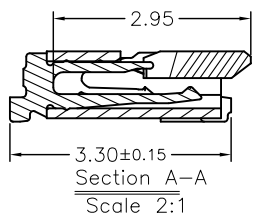
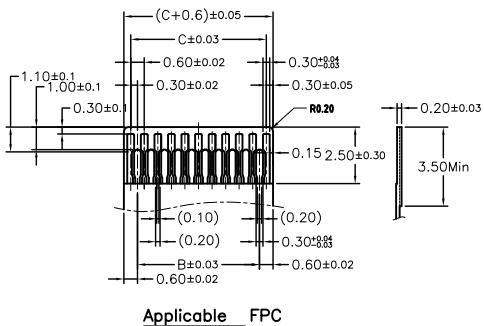
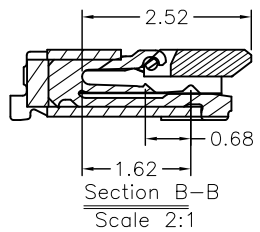
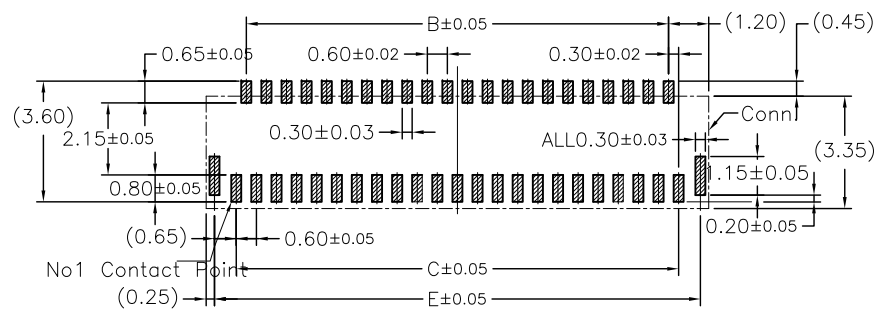
■ PART NO.

697-FPC03PSN-H10-xx R L
 L: Low Pb
 T: Tube R: Reel (5000 pcs / R)
 See Number Of Contacts
 Series



★ Available Number of Contacts

Number of Contacts	Dimension				
	A	B	C	D	E
13	5.40	3.00	3.60	4.30	4.90
15	6.00	3.60	4.20	4.90	5.50
17	6.60	4.20	4.80	5.50	6.10
19	7.20	4.80	5.40	6.10	6.70
21	7.80	5.40	6.00	6.70	7.30
23	8.40	6.00	6.60	7.30	7.90
25	9.00	6.60	7.20	7.90	8.50
27	9.60	7.20	7.80	8.50	9.10
29	10.20	7.80	8.40	9.10	9.70
31	10.80	8.40	9.00	9.70	10.30
33	11.40	9.00	9.60	10.30	10.90
35	12.00	9.60	10.20	10.90	11.50
37	12.60	10.20	10.80	11.50	12.10
39	13.20	10.80	11.40	12.10	12.70
41	13.80	11.40	12.00	12.70	13.30
45	15.00	12.60	13.20	13.90	14.50
49	16.20	13.80	14.40	15.10	15.70
51	16.80	14.40	15.00	15.70	16.30
57	18.60	16.20	16.80	17.50	18.10
61	19.80	17.40	18.00	18.70	19.30
67	21.60	19.20	19.80	20.50	21.10
71	22.80	20.40	21.00	21.70	22.30
73	23.40	21.00	21.60	22.30	22.90



FPC/FFC Insert Direction
 Recommended P.C.B Layout

PROPRIETARY NOTE:

This document contains confidential information and proprietary to Rego Electronics and shall not be reproduced or disclosed to other documents or used for any purpose other than that for which was obtained without the expressed written consent of Rego Electronics.

.X ± 0.30 APPROVED: Chris
 .XX ± 0.20 CHECKED: Denny
 .XXX ± 0.15 DRAWN: Bryan
 X* ± 3*



TITLE: FPC-FFC Connector 0.3mm Press Locking Type H=1.0mm

UNITS: mm SCALE: NONE

PART NO: 697-FPC03PSN-H10-xxRL
 SHEET: 1 OF 1

A	22.5.2017
REV	DATE